

SOSS Insights

A newsletter of the SMU School of Social Sciences

Issue 6, August 2023



Contents

Thought Leadership	2-3
SOSS Research at a glance	4
Publication Highlights Books & Journal Articles	5-11
Events	12-20
Faculty Spotlight	21-22
Achievements	23-27

Singapore Management University
School of Social Sciences
10 Canning Rise
Singapore 179873
www.socsc.smu.edu.sg
Email: socsc@smu.edu.sg
Tel: +65 6828 1976

 @SMUSOSS

 @sgSMUSOSS



Lily Kong

President; Lee Kong Chian Chair Professor of Social Sciences

Keynote and Plenary Addresses

- “Standing on Common Ground – Space and Community in Singapore”, SOKA Gakai Singapore Peace Lecture 2023, 29 May 2023, Punggol SOKA Centre, Singapore.
- “Universities and international collaborations”, Plenary Speaker, Canada-in-Asia Conference, High Commission of Canada, Raffles City Convention Centre, 22 February 2023, Singapore

Panel Speaker/Moderator (Education/Leadership)

- “Women in Leadership: Lessons from Technology, and Finance, and Higher Education”, International Women’s Day 2023 event jointly organised by BlackRock and Singapore Management University, Administration Building, 15 March 2023, Singapore
- “Pillars of Security: Social Cohesion & Resilience”, Panel 3: “Polarisation and its Effects On Resilience”, 14th Asia-Pacific Programme for Senior National Security Officers (APPSNO), Parkroyal Collection, Marina Bay, Singapore, 26 April 2023

Opinion Editorials

- Kong, L. and Lim, S. With generative AI, do we still need universities, The Straits Times, (11 May 2023)
- Kong, L. A holistic blueprint for sustainability publication outlet. Times Higher Education. (2 May 2023)

Thought Leadership



David Chan

Lee Kong Chian Professor of Psychology;
Director, Behavioural Science Initiative (BSI)

- Invited Keynote titled Evidence-based Computational Social Science, CUHK-SMU Global Forum, Hong Kong 2023. (<https://youtu.be/6ue6YSFgyRM> & https://youtu.be/O_cSrwoPi7c)
- Feature Interview titled Understanding Adaptability: What's resilience got to do with it? City Perspectives, 2023, SMU, Singapore. Video of session: [Understanding adaptability: What's resilience got to do with it? - YouTube](#)



Angela Leung

Professor of Psychology;
Chair, SMU Institutional Review Board

- Invited presentation titled “Psychological well-being and consumer acceptance of cultivated meat” at the Alternative Protein Asia Seminar, FHA-Food & Beverage, April 2023



David Ocón

Assistant Professor of Arts and Cultural Management (Practice)

- Feature Interview titled Preserving Asia's Cultural Heritage in the Digital Age, City Perspectives, 2023, SMU, Singapore.



Tan Sor Hoon

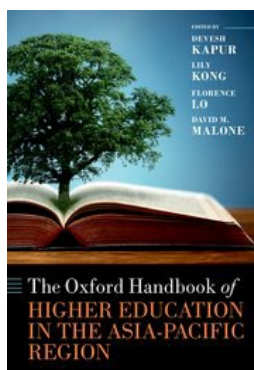
Professor of Philosophy;
Academic Director of Politics, Law and Economics (PLE)

- Feature Interview titled Can Confucianism support gender equality? City Perspectives, 2023, SMU, Singapore.

SOSS Research at a glance

Activities	Numbers (Jan - Jun 2023)
Journal publications	40
Other publications	12
Events – Public Lectures, Invited Talks, Seminars, etc	34
Conference presentations	29
Research grants (Project start date: Jan – Jun 23)	5 (\$\$198,580)

Publication Highlights - Book



The Oxford Handbook of Higher Education in the Asia-Pacific Region
Edited by Devesh Kapur, Lily Kong, Florence Lo, and David M. Malone
Oxford University Press



Lily Kong

President;
Lee Kong Chian Chair
Professor of Social
Sciences

Since the turn of the millennium it has become clear that the Asia-Pacific Region is, economically, the fastest growing continent in the world, and is likely to remain so for some time despite the setbacks of the COVID-19 pandemic. Asia-Pacific's share of the world's Gross Domestic Product (GDP) doubled from 15 per cent to 30 per cent between 1970 and 2017 and is projected to account for half of global GDP by 2050. With South East and South Asia also growing rapidly, with over half the world's population and three of the world's five largest economies, Asia is soon poised to home half of the world's middle class - a class that is both the driver and the product of higher education.

The quality of a country's system of higher education may be seen both as a gauge of its current level of national development as well as of its future economic prospects. It is therefore natural that the putative "Asian Century" should generate interest in the region's higher education systems which, on the one hand, share common characteristics—a fixation with credentials and engineering, high technology (especially among male students), and business degrees—while at the same time are also highly differentiated, not only across countries but also within. As such, a better understanding of higher education achievements, failings, potential, and structural limitations in the Asia-Pacific Region is imperative.

This handbook presents a number of significant country case-studies and documents cross-cutting trends relating to, among other things: the trilemma faced by governments juggling competing claims of access, accessible cost, and quality; the balance between teaching and research; the links between labour markets (demand) and higher education (supply); preferred fields of study and their consequences; the rise of the research university in Asia; the lure of institutions of international reputation within the region; new education technologies and their effects; and, trends in government policy within the wider region and sub-regions.

<https://academic.oup.com/edited-volume/45637>

Publication Highlights – Journal Articles

Validated Journal Articles (1 Jan – 30 Jun 23) extracted from IRIS Publications on 13 Jul 23

Humanities

Lily Kong

Gao, Q., Woods, O., & Kong, L. (2022). Squeezed out by the market, seeking strength in the network: Makeshift temples and the spatio-affective logics of survival in Singapore. *Transactions of the Institute of British Geographers*.

Steven Burik

BURIK, S. (2023). Review of Dao companion to Xuanxue (Neo-Daoism), Chai, David. *Dao*, 1.

Matthew Hammerton

Hammerton, M. (2023) Well-being and Meaning in Life. *Canadian Journal of Philosophy*, 52(5), 573-587.

Joshua Luczak

Luczak, J. (2023). Climate denialism bullshit is harmful. *Asian Journal of Philosophy*, 2(1), 7.

David Ocón

Jihua, Y., & Ocón, D. (2023). Motivations, Policies and Performance: A Review of China's Culture 'Going Out' Strategy. *Journal of Asian Public Policy*, 1-24.

Tan Sor Hoon

Tan, S. H. (2023). Texts and Traditions in Chinese and Comparative Philosophy. *History and Theory*, 62(1), 88-105.



Lily Kong

SMU President;
Lee Kong Chian
Chair Professor of
Social Sciences



Steven Burik

Associate Professor of
Philosophy (Education);
Associate Dean
(Student Matters &
Alumni Affairs)



Matthew Hammerton

Assistant Professor
of Philosophy;
Basket Coordinator for
Modes of Thinking;
Lee Kong Chian Fellow



Joshua Luczak

Assistant Professor
of Philosophy
(Education)



David Ocón

Assistant Professor of
Arts and Cultural
Management
(Practice)



Tan Sor Hoon

Professor of Philosophy;
Academic Director of
Politics, Law and
Economics (PLE) major

Publication Highlights – Journal Articles

Validated Journal Articles (1 Jan – 30 Jun 23) extracted from IRIS Publications on 13 Jul 23

Political Science

Sebastian Dettman

Dettman, S. (2023). The Geographic Scope Of Opposition Challenges In Malaysia's Parliament Sebastian Dettman. *Pacific Affairs*, 96(2), 253-279.

Dean Dulay

Dulay, D., Hicken, A., & Holmes, R. (2022). The Persistence of Ethnopolitist Support: The Case of Rodrigo Duterte's Philippines. *Journal of East Asian Studies*, 22(3), 525-553.

Dulay, D., Hicken, A., Menon, A., & Holmes, R. (2023). Continuity, History, and Identity: Why Bongbong Marcos Won the 2022 Philippine Presidential Election. *Pacific Affairs*, 96(1), 85-104.

Christine Henderson

Henderson, C. D. (2023). Revisiting Tocqueville's American Woman. *Political Theory*, 00905917231167092.

Devin Joshi

Joshi, D. K. (2023). Daoist feminist leadership for international peace: the case of Jeannette Rankin. *International Feminist Journal of Politics*, 25(2), 179-200.

Seulki Lee

de Santibañes, M., Ospina, S. M., Lee, S., Santamaria, A., Evans, M. M., Muelas, D., & Guerrero, N. (2023). The dialectics of leadership identity construction: Case studies from Indigenous women leaders. *Leadership*, 17427150231169554.

Frances Wang

Chubb, A., & Wang, F. Y. (2022). Authoritarian propaganda campaigns on foreign affairs: four birds with one stone. *Andrew Chubb, Frances Yaping Wang, " Authoritarian Propaganda Campaigns on Foreign Affairs: Four Birds With One Stone.*



Sebastian Dettman
Assistant Professor
of Political Science



Dean Dulay
Assistant Professor
of Political Science;
Lee Kong Chian
Fellow



Christine Henderson
Associate Professor of
Political Science



Devin Joshi
Associate Professor of
Political Science;
Lee Kong Chian Fellow



Seulki Lee
Assistant Professor of
Public Policy;
Lee Kong Chian Fellow



Frances Wang
Assistant Professor of
Political Science

Publication Highlights – Journal Articles

Validated Journal Articles (1 Jan – 30 Jun 23) extracted from IRIS Publications on 13 Jul 23

Psychology

Cheng Chi-Ying

Gan, C., Cheng, C. Y., Chai, Y., & Yang, L. (2023). Ethical leadership and employee unethical behavior: a dual-processing model. *Management Decision*, 61(6), 1501-1516.

Cheng, C. Y., & Wee, S. X. (2023). Kiasu (fear of losing out): An indigenous psychological construct in Singapore and its impact. *International Perspectives in Psychology: Research, Practice, Consultation*, 12(2), 65-74.

Andree Hartanto

Hartanto, A., Chua, Y. J., Quek, F. Y. X., Wong, J., Ooi, W. M., & Majeed, N. M. (2023). Problematic smartphone usage, objective smartphone engagement, and executive functions: A latent variable analysis. *Attention, Perception, & Psychophysics*. 1-16

Ng, T. L. Y., Majeed, N. M., Lua, V. Y. Q., & Hartanto, A. (2023). Do executive functions buffer against COVID-19 fear and stress? A latent variable approach. *Current Psychology*. 1-17.

Grossmann, I., Rotella, A., Hutcherson, C., Sharpinskyi, K., Varnum, M. E. W., Achter, S., ..., Hartanto, A., ..., Wilkening, T. Insights into accuracy of social scientists' forecasts of societal change. *Nature Human Behaviour*, 7, 484-501.

Hartanto, A., Lee, K. Y., Chua, Y. J., Quek, F. Y., & Majeed, N. M. (2023). Smartphone use and daily cognitive failures: A critical examination using a daily diary approach with objective smartphone measures. *British Journal of Psychology*, 114(1), 70-85.

Majeed, N. M., Chua, Y. J., Kothari, M., Kaur, M., Quek, F. X., Ng, M. H., ... & Hartanto, A. (2023). Anxiety disorders and executive functions: A three-level meta-analysis of reaction time and accuracy. *Psychiatry Research Communications*, 100100.

Veerapandian, K. D., Tan, G. X., Majeed, N. M., & Hartanto, A. (2023). Executive function deficits and borderline personality disorder symptomatology in a nonclinical adult sample: A latent variable analysis. *Brain Sciences*, 13(2), 206.

Goh, A. Y., Chia, S. M., Majeed, N. M., Chen, N. R., & Hartanto, A. (2023). Untangling the additive and multiplicative relations between natural scenery exposure and human-animal interaction on affective well-being: Evidence from daily diary studies. *Sustainability*, 15(4), 2910.

Hartanto, A., Teo, N. L. A., Lua, V. Y., Tay, K. J., Chen, N. R., & Majeed, N. M. (2023). Does Watching Videos With Natural Scenery Restore Attentional Resources? A critical examination through a pre-registered within-subject experiment. *Experimental Psychology*, 70(2), 96-107

Majeed, N. M., Kasturiratna, K. S., Lua, V. Y., Li, M. Y., & Hartanto, A. (2023). Discrimination and cognitive failures in Singapore and the US: An investigation of between-and within-persons associations through multilevel modelling. *International Journal of Intercultural Relations*, 94, 101805.



Cheng Chi-Ying

Associate Professor of Psychology;
Lee Kong Chian Fellow;
Advisory Member, SMU
Institutional Review Board



Andree Hartanto

Assistant Professor of Psychology (Education)

Publication Highlights – Journal Articles

Validated Journal Articles (1 Jan – 30 Jun 23) extracted from IRIS Publications on 13 Jul 23

Psychology

Angela Leung

Leung, A. K. Y., Chong, M., Fernandez, T. M., & Ng, S. T. (2023). Higher well-being individuals are more receptive to cultivated meat: An investigation of their reasoning for consuming cultivated meat. *Appetite, 184*, 106496.

Sibo, I. P. H., Celis, D. A. G., Liou, S., Koh, B., & Leung, A. K. (2023). The role of argumentation on high-and low-creative performing groups: A structuration analysis of undergraduate students' group discussion. *Thinking Skills and Creativity, 47*, 101217.

Norman Li

Lim, A. J., Li, N. P., Manesi, Z., Neuberg, S. L., van Vugt, M., Meltzer, A. L., & Tan, K. (2023). Desire for Social Status Affects Marital and Reproductive Attitudes: A Life History Mismatch Perspective. *Current Research in Ecological and Social Psychology, 100125*.

Folwarczny, M., Otterbring, T., Sigurdsson, V., Tan, L. K., & Li, N. P. (2022). Old minds, new marketplaces: How evolved psychological mechanisms trigger mismatched food preferences. *Evolutionary Behavioral Sciences*.

Fu, J., Tan, L. K., Li, N. P., & Wang, X. (2023). Imprinting-like effects of early adolescent music. *Psychology of Music, 03057356231156201*.

Samore, T., Fessler, D. M., Sparks, A. M., Holbrook, C., Aarøe, L., Li, N. P., .. & Wang, X. T. (2023). Greater traditionalism predicts COVID-19 precautionary behaviors across 27 societies. *Scientific reports, 13*(1), 4969.

Tan, L. K., Folwarczny, M., Gasiorowska, A., & Li, N. P. (2023). Dolling-up under disease threats: Do pathogen threats motivate attractiveness signaling?. *Evolutionary Behavioral Sciences*.

Lester Sim

Sim, L., Ip, K. I., Ascigil, E., Edelstein, R. S., & Lee, F. (2023). Cross-cultural differences in supportive responses to positive event disclosure. *The Journal of Positive Psychology, 1-14*.



Angela Leung

Professor of Psychology;
Chair, SMU Institutional
Review Board



Norman Li

Professor of Psychology



Lester Sim

Assistant Professor of
Psychology

Publication Highlights – Journal Articles

Validated Journal Articles (1 Jan – 30 Jun 23) extracted from IRIS Publications on 13 Jul 23

Psychology

Kennthe Tan

Lim, A. J., Li, N. P., Manesi, Z., Neuberg, S. L., van Vugt, M., Meltzer, A. L., & Tan, K. (2023). Desire for Social Status Affects Marital and Reproductive Attitudes: A Life History Mismatch Perspective. *Current Research in Ecological and Social Psychology*, 100125.

William Tov

Lau, C. Y. H., & Tov, W. (2023). Effects of positive reappraisal and self-distancing on the meaningfulness of everyday negative events. *Frontiers in Psychology*, 14, 1093412.

Yang Hwajin

Yang, H., Tng, G. Y., Ng, G. R., & Ng, W. Q. (2023). Bilingual interactional contexts predict executive functions in older adults. *Bilingualism: Language and Cognition*, 26(1), 36-47.



Kenneth Tan

Assistant Professor of Psychology;
Lee Kong Chian Fellow



William Tov

Associate Professor of Psychology;
Deputy Director,
Centre for Research on Successful Ageing (ROSA)



Hwajin Yang

Associate Professor of Psychology;
PGR Coordinator

Publication Highlights – Journal Articles

Validated Journal Articles (1 Jan – 30 Jun 23) extracted from IRIS Publications on 13 Jul 23

Sociology

Cheng Cheng

Cheng, C., & Zhao, M. (2023). Multigenerational coresidence and parental time in developmental childcare in China. *Research in Social Stratification and Mobility*, 85, 100800.

Cheng, C., & Xie, Y. (2023). Towards an extended resource theory of marital power: parental education and household decision-making in rural China. *European Sociological Review*, jcad032.

Paulin Straughan

Tadai, M. E., Straughan, P. T., Cheong, G., Yi, R. N. W., & Er, T. Y. (2023). The effects of SES, social support, and resilience on older adults' well-being during COVID-19: Evidence from Singapore. *Urban Governance*, 3(1), 14-21.

Straughan, P. T., & Xu, C. (2023). How does parents' social support impact children's health practice? Examining a mediating role of health knowledge. *Global Health Research and Policy*, 8(1), 8.

Fong, J. H., & Straughan, P. (2023). Private Long-Term Care Insurance Ownership in a Simple Choice Environment: Does Financial Literacy Matter?. *Journal of Aging & Social Policy*, 1-19.



Cheng Cheng

Assistant Professor of
Sociology;
Lee Kong Chian Fellow



Paulin Straughan

Dean of Students;
Professor of
Sociology (Practice);
Director, Centre for
Research on
Successful Ageing
(ROSA)

SOSS Research Camp

10 April 2023



PRESENTATION BY YASMIN ORTIGA, ASSISTANT PROFESSOR OF SOCIOLOGY

Labor shortages, misrecognized skills: Migrant healthcare workers in Singapore

Studies on the migration of healthcare workers have mainly treated “skill” as a resource that individuals carry across borders, thus prompting ongoing comparisons between the poor countries that lose health workers to richer nations that recruit them. In this presentation, I examine skill as a construct that is integral to a migration infrastructure built around the assessment, evaluation, and certification of foreign professionals. Drawing on a pilot study of the experiences of Filipino nurses in Singapore, I illustrate how such infrastructures of skill determine not only healthcare workers’ entry into the country but their eventual exit and remigration. Rather than regard skill as a singular fixed quality, I find that Singapore employers, professional associations, and government agencies often have multiple and sometimes contradictory definitions of how to assess the capabilities of foreign health professionals. These issues have serious implications for the country’s human resources for health and the well-being of Singaporeans in general.

PRESENTATION BY MATTHEW HAMMERTON, ASSISTANT PROFESSOR OF PHILOSOPHY

Self-Sacrifice, Injustice, and Intelligibility

It is widely held that making a self-sacrifice in the service of something worthwhile adds meaning to our lives. For example, it seems highly meaningful for a parent to sacrifice their life in order to save the lives of their children. In this paper, I raise a puzzle for our views about the meaningfulness of self-sacrifice. I show that when we add certain kinds of injustice to the backstory of why the self-sacrifice is needed, many people judge that the meaning of the sacrifice is significantly diminished. Yet, this response seems hard to justify. If two people heroically sacrifice their lives in very similar circumstances, bringing about the same good effects, why should the fact that one of them was responding to an unavoidable natural threat and the other was responding to a threat brought about by injustice make a difference to the meaning of their sacrifice? To resolve this puzzle, I argue that we need to distinguish three aspects of meaning in life—meaning as *purpose*, meaning as *mattering*, and meaning as *intelligibility*.



SOSS Research Camp

10 April 2023



PRESENTATION BY LESTER SIM, ASSISTANT PROFESSOR OF PSYCHOLOGY

Cumulative strengths predict baseline and longitudinal changes in Mexican-origin adolescents' resilience

Resilience is often conceived as a multidimensional process that relates to adolescents' ability to beat the odds and show positive outcomes in the face of adversity (Masten, 2011). For Mexican-origin adolescents who are exposed to a unique set of adaptation challenges (e.g., ethnic discrimination and fitting in with a White majority; Park et al., 2018), identifying cultural and environmental resources across adolescents' ecology that aid in resilience building may be one avenue for which scholars may be informed on how Mexican-origin youth can thrive later in life. This study adopts a cultural ecological perspective to examine how cumulative effects of cultural strengths are related to initial levels of and growths in Mexican-origin adolescents' resilience from early to later adolescence. Using a 3-wave longitudinal dataset (5 years) of 604 Mexican-origin adolescents, a cumulative strengths (CS) index was calculated via summing Mexican-origin adolescents' cultural strengths, spanning across multiple system levels that have been related to positive adolescent development. Using growth curve analysis, the findings showed that adolescents' resilience increased from early to later adolescence. Further, results from conditioned growth curve analyses revealed that adolescents with higher CS scores showed higher baseline resilience but showed slower increases in resilience. The findings emphasize a cultural ecological understanding of Mexican-origin youths' positive development from early to later adolescence. They also provide support for a CS model and have implications for positive psychology theories.

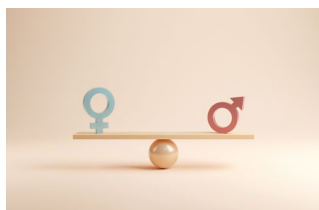


Mutual contempt in the Zhuangzi

Speaker: Karyn Lai, Professor of Philosophy, University of New South Wales
10 January 2023

The East-West Philosophy Forum

Host: Singapore Management University, School of Social Sciences
12 & 13 January 2023

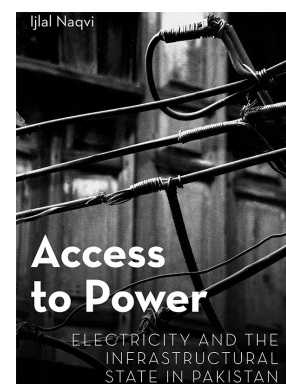


Of Deviance and Patriarchy: Mechanisms of Gender Discrimination in Russia's Corruption Markets

Speaker: Marina Zaloznaya, Associate Professor of Sociology and Political Science, Director of the European Studies Group, University of Iowa
18 January 2023

Book Launch: Access to Power: Electricity and the Infrastructural State in Pakistan

Author: Ijlal Naqvi, Associate Professor of Sociology, Associate Dean (Curriculum and Teaching), SOSS, SMU
20 January 2023





The Role of Perceived Others' Motives in Moral Norm Inferences from Descriptive Norms

Speaker: Kimin Eom, Assistant Professor of Psychology, SOSS, SMU

31 January 2023

The Ethics of Protecting Heritage in War

Speaker: Helen Frowe, Professor of Practical Philosophy, University of Stockholm

3 February 2023



Accents and Immigrant Tolerance: Experimental Evidence from the Taiwanese in Taiwan and the US

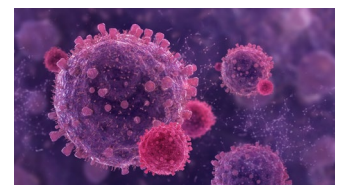
Speaker: Amy Liu, Associate Professor, University of Texas

13 February 2023

Public Adaptive Capacity for Policy Design: A focus on Environmental Disease Responses

Speaker: Ishani Mukherjee, Associate Professor of Public Policy, Lee Kong Chian Fellow, SOSS, SMU and Panchali Guha, Research Fellow, SOSS, SMU

13 February 2023



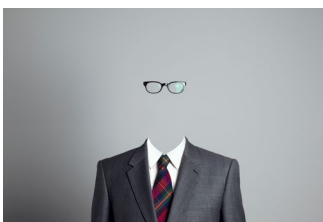


To switch or not to switch: Individual differences in executive function and emotion-regulation flexibility

Speaker: Noah Toh, Assistant Professor of Psychology, NTU
21 February 2023

Pillars of the Community: Are Communist Party Members More Other-Regarding Than Non-Party Members?

Speaker: Paul Schuler, Associate Professor of Political Science, University of Arizona
8 March 2023

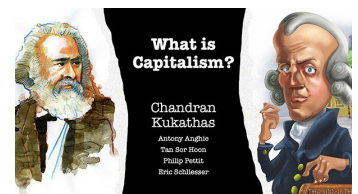


A Genealogy of Responsibility

Speaker: Philip Pettit, L.S. Rockefeller University Professor of Human Values, Princeton University; Distinguished Professor of Philosophy, Australian National University
9 March 2023

Lee Kong Chian Chair Professorship Public Lecture | What is Capitalism?

Speaker: Chandran Kukathas, Dean, Lee Kong Chian Chair Professor of Political Science, SOSS, SMU
10 March 2023



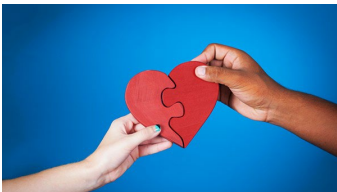


Bilingual Profiles Differentially Predict Executive Functions During Early Childhood

Speaker: Yang Hwajin, Associate Professor of Psychology, Lee Kong Chian Fellow,
14 March 2023

Generational differences in local identities, participation in social movements, and migration intention among Hongkongers

Speaker: Man-Yee Kan, Professor of Sociology, University of Oxford
15 March 2023



Security and Safety in Adult Relationships

Speaker: Ximena Arriaga, Professor of Psychological Sciences and University Faculty Scholar, Purdue University
16 March 2023

How do thinking of the past and the future shape our creativity?

Speaker: Brandon Koh, Assistant Professor of Psychology SUSS
28 March 2023





Malaysia's 2022 Election and its Aftermath: What the Four Arenas framework tells us about voting behaviour and government stability

Speaker: Kai Ostwald, Associate Professor of Political Science, The University of British Columbia

29 March 2023

Ambivalent singlism: The ironic effects of singlehood stereotypes

Speaker: Kenneth Tan, Assistant Professor of Psychology, SOSS, SMU

30 March 2023



Majority Minority: The Politics of Demographic Change in the Unsustainable Nation

Speaker: Justin Gest, Associate Professor of Policy and Government, George Mason University

31 March 2023

To Mobilize or To Pacify: Authoritarian Media Campaigns in Conflicts

Speaker: Frances Wang, Assistant Professor of Political Science, SOSS, SMU

3 April 2023





Contextualizing China's Influence in Southeast Asia: Domestic Politics and Authoritarian Resilience in Thailand

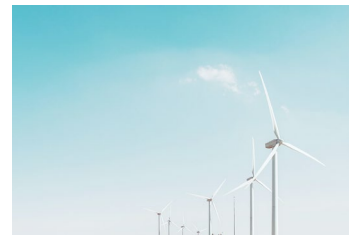
Speaker: Enze Han, Associate Professor, University of Hong Kong

10 April 2023

Climate Injustice and Prefigurative Politics

Speaker: Jon Masin-Peters, Assistant Professor of Political Theory, Boston University

11 April 2023



The Defence of Western Civilization: Racialized Liberalism in the Making of the North Atlantic Security Community, 1947- 1949

Speaker: Amoz Hor, PhD Candidate, George Washington University

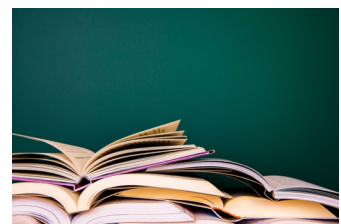
12 April 2023

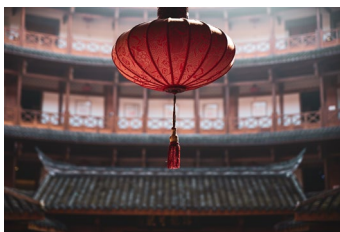
Are There "Progressive Maharajas"?

Speaker: Rahul Sagar, Associate Professor of Political Science

New York University Abu Dhabi

13 April 2023





Chinese Global Orders: Socialism, Tradition, and Nation in China-Russia Relations

Speaker: William A. Callahan, Professor of International Relations, London School of Economics and Political Science
2 May 2023

Multiracial Identity Integration: Components, Antecedents, and Consequences

Speaker: Sheila Wee Xi Rui, PhD Candidate in Psychology, SOSS, SMU
1 June 2023



No interest in being cynical: Conflicting versus corresponding interests track variability in the link between a sense of control and cynicism

Speaker: Bryan Choy Kwok Cheng, PhD Candidate in Psychology
23 June 2023

Faculty Spotlight



Cheng Cheng

Assistant Professor of Sociology;
Lee Kong Chian Fellow

Cheng's research lies in the intersection of family demography, sociology of gender, and social stratification. She studies the reproduction of social inequality through the lens of the *extended* family. Her work examines the linked lives of spouses, siblings, parents, parents-in-law, children, and grandchildren and how these intra-couple, inter-sibling, and inter-generational dynamics shape the social, economic, and subjective well-being of individuals and families. Cheng uses a variety of quantitative methods in her work to analyze dyadic, multigenerational, longitudinal survey data. Her current research comprises three main streams.

The first stream investigates how extended family relationships reshape the gender distribution of power and division of labor. Her work expands the prevailing nuclear-family paradigm in studies of family gender dynamics to an extended-family paradigm. Her research suggests that the balance of marital power is directly affected by the relative resources of the couple's respective parents, above and beyond the relative resources of the couple themselves. Furthermore, extended household structure introduces an intergenerational division of labor that alters women's time allocation between family and work.

The second stream examines how the extended family contributes to the persistence of wealth and income inequalities within and across generations. Her work indicates that individual income and wealth trajectories are shaped by not only their own socioeconomic status but also that of their partners, parents, and parents-in-law. In addition, these intra- and inter-generational processes contribute to sustained gender disparities in economic well-being. The gender wealth gap stems from intra-household bargaining, as well as gendered processes of inter-sibling and inter-generational transfers.

The third stream explores the implications of intergenerational and spousal dynamics for health disparities in later life. She adopts a dyadic perspective to study the intricate linkages between spouses' well-being. In addition, her work emphasizes the importance of cultural contexts in studying health and well-being in old age. Her research shows that the source of social support and the type of social engagement matter for later-life health, and these effects can vary across social contexts.

In an era of rapid population aging and prolonged life expectancy that expands opportunities for intergenerational interactions, Cheng's work demonstrates how the extended family can reproduce inequalities within and across generations.



Kimin Eom

Assistant Professor of Psychology
Lee Kong Chian Fellow

Kimin's research interests revolve around prosociality, broadly defined—why people behave in ways that benefit others, society, and the globe. He examines this topic within the context of social and global challenges that pose threats to society's sustainability, such as climate change and pandemics. Specifically, his current research delves into how cultural factors, such as cultural values, worldviews, and norms, shape attitudes, emotions, and behaviors regarding environmental sustainability.

One particular issue that his research has investigated over the past few years is how individuals' environmental beliefs (concerns about sustainability, belief in climate change, etc.) are associated with their motivation and support to address environmental issues. Through a series of studies, he has found that diverse forms of culture moderate the association between environmental beliefs and pro-environmental motivation. Notably, personal environmental beliefs prove to be more reliable predictors of sustainability-related decision-making and behavior in cultures that afford and emphasize direct self-expression through behavior—such as individualistic, high-SES, and secular cultures—than in collectivistic, low-SES, and religious cultures. Furthermore, his work has revealed that a sense of control—the perception that individuals could or should have control over outcomes—is a common psychological factor that underlies these sociocultural differences.

Presently, he is expanding his work through active programs of research. Some of the key questions include: (1) How people respond to social and cultural norms around sustainability and how these processes affect environmental and prosocial motivation and (2) How multiple sociocultural factors jointly shape sustainability behavior. Importantly, he has also started to approach sustainability issues in a broader sense beyond the environmental aspect. His recent work has examined topics relevant to *social* sustainability by studying how attitudes and behaviors towards outgroups change in response to societal and global threats such as pandemics.

Achievements – Awards/Recognitions



Lily Kong
President;
Lee Kong Chian Chair
Professor of Social
Sciences

- ❖ Soka Gakkai Singapore (SGS) Friendship Award



Kimin Eom
Assistant Professor
of Psychology;
Lee Kong Chian
Fellow

- ❖ APS Rising Star by the Association for Psychological Science



Seulki Lee
Assistant Professor of
Public Policy;
Lee Kong Chian Fellow

- ❖ 2023 Beryl Radin Award for Best Article in *Journal of Public Administration Research and Theory* (Lee 2022 “When Tensions Become Opportunities: Managing Accountability Demands in Collaborative Governance,” *Journal of Public Administration Research and Theory*, 32(4), 641-655).
- ❖ 2023 Outstanding Reviewer Award for the *Journal of Public Administration Research and Theory*.



Ishani Mukherjee
Associate Professor of
Public Policy

- ❖ Best Article Award 2022 by Review of Policy Research (RPR) *Journal* (Mukherjee, I. (2022). Fueling green connections: Networked policy instrument choices for sustainability regulation. *Review of Policy Research*, 39(5), 602-631.)

Achievements - Awards

Lee Kong Chian Fellowship



Dean Dulay

Assistant Professor of Political Science;
Lee Kong Chian Fellow



Kimin Eom

Assistant Professor of Psychology;
Lee Kong Chian Fellow



Liu Jiaqi

Assistant Professor of Sociology;
Lee Kong Chian Fellow



Matthew Hammerton

Assistant Professor of Philosophy;
Lee Kong Chian Fellow



Charlotte Setijadi

Assistant Professor of Humanities
(Education); Lee Kong Chian Fellow



Kenneth Tan

Assistant Professor of Psychology;
Lee Kong Chian Fellow



Yasmin Ortiga

Assistant Professor of Sociology;
Lee Kong Chian Fellow

Achievements – Research Grants

Research Projects Awarded Jan – Jul 2023

Social Science and Humanities Research Fellowship



PI: **Jacinth Tan**, Assistant Professor of Psychology
Project title: Unite or Divide? How Exposure To Socioeconomic Diversity Shapes Cross-Class Relations

PMO – Marriage and Parenthood Fund



PI: **Kenneth Tan**, Assistant Professor of Psychology; Lee Kong Chian Fellow
Project title: Nudging relationship receptivity: Utilizing implementation intentions and growth mindsets to boost dating behavior and romantic relationship formation in Singapore

Social Science Research Thematic Grant



Co-I: **Angela Leung**, Professor of Psychology; Chair, SMU Institutional Review Board
Project title: Leveraging Shared Experience of Urban Heat and Bridging Spatial-Temporal Dissonance: Towards a Climate Resilient Citizenry in Singapore

SMU Internal Research Grant [Partnership Edition]



PI: **Yasmin Ortiga**, Assistant Professor of Sociology, Lee Kong Chian Fellow
Project title: What Makes a “Good” Employer?: Dilemmas of Domestic Labor in the Global City

Achievements – Research Grants

Research Projects Awarded Jan – Jun 2023

SMU Internal Research Grant



PI: **Sebastian Dettman**, Assistant Professor of Political Science
Project title: Climate Change Policy in the Subnational Arena: Evidence from Malaysia



PI: **Kimin Eom**, Assistant Professor of Psychology, Lee Kong Chian Fellow
Project title: Psychological Responses to Corporate Social Responsibility: The Role of CEO-to-Worker Wage Ratio



PI: **Andree Hartanto**, Assistant Professor of Psychology (Education)
Project title: Investigating Predictors, Mechanisms, and Outcomes of Well-being Fluctuations Across an Academic Semester in University Students: A Multimethod Approach



PI: **Seulki Lee**, Assistant Professor of Public Policy, Lee Kong Chian Fellow
Project title: Expectations, Disconfirmation, and Voter Punishment of Corruption

Achievements - Promotion

The School of Social Sciences is delighted to announce the following promotion:

**Promotion to Associate Professor
with effect from July 2023**



Colm Fox
Associate Professor of Political Science
Office: #04-03
Tel: 6828 0849
Email: colmfox@smu.edu.sg