

SOSS Insights

A newsletter of the SMU School of Social Sciences

Issue 5, February 2023



Singapore Management University
School of Social Sciences
10 Canning Rise
Singapore 179873
www.socsc.smu.edu.sg
Email: socsc@smu.edu.sg
Tel: +65 6828 1976

 @SMUSOSS

 @sgSMUSOSS

Contents

Thought Leadership	2-5
SOSS Research at a glance	6
Publication Highlights Books & Journal Articles	7-13
Events	14-20
Faculty Spotlight	21-22
Achievements	23-26

Thought Leadership



Lily Kong

President; Lee Kong Chian Chair
Professor of Social Sciences

Keynote Speeches, Invited Talks, Interviews

Date	Event	Role
10 Jul 2022	Les Rencontres Economiques (Aix-en-Provence, France) Session no. 43: "Youth, actors in the world's progress?" (Hybrid)	Roundtable Speaker
18 Jul 2022	APAC Network Panel-Equinix Sustainability Leaders Series: Theme: Future sustainability leaders & future skillsets required (Video interview)	Interviewee
2 Aug 2022	World Cities Summit 2022 (Singapore) Panel session on future cities: "What does the Future Hold for Cities?"	Panel Speaker
6 Sep 2022	International Conference on Cohesive Societies 2022 (Singapore) Special presentation featuring Prof Katherine Marshall and Prof Lily Kong	Panel Speaker
23 Sep 2022	SMU Roundtable Discussion on New Religious Pluralisms in Singapore (Virtual)	Speaker
26 Sep 2022	Forbes Global CEO Conference (Singapore) Session IV: Leadership Unmasked	Panel Speaker
27 Sep 2022	ASEAN University Network Rectors' Meeting Hosted by National University of Laos (Laos) Agenda 2: Interdisciplinarity and the Future of ASEAN Higher Education (Hybrid)	Panel Speaker
4 Oct 2022	University of the Philippines System Education Conference (Philippines) Plenary 3 – New directions and imperatives (what is taught in GE) (Virtual)	Plenary Speaker
5 Oct 2022	Universiti Malaya University Presidents Forum (Malaysia) Theme: Empowerment of Women in Higher Education: The Hand that Rocks the Cradle (Webinar)	Panel Speaker
2 Nov 2022	Inaugural Global Lifelong Learning Summit (Singapore) Continuous Education v2: How institutions can innovate and adapt	Panel Speaker
29 Nov 2022	Women's Forum Global Meeting 2022 (Paris) Topic: Skills and education in the race for humanity (Hybrid)	Panel Speaker
30 Nov 2022	British Council's Going Global Asia Pacific 2022 Conference (Singapore) Second Plenary Session: Addressing the Gender Gaps in Higher Education	Plenary Speaker

Thought Leadership



Lily Kong

President; Lee Kong Chian Chair Professor of Social Sciences

- “Young Singaporeans abroad and their misguided sense of superiority towards S-E Asia”, The Straits Times, 22 November 2022



Chandran Kukathas

Dean, School of Social Sciences;
Lee Kong Chian Chair Professor of Political Science

- “The Anti-Democratic Nature of Immigration Control”, The Sarat Chandra Bose Lecture 2022 organised by Netaji Research Bureau, 7 August 2022



David Chan

Lee Kong Chian Professor of Psychology;
Director, Behavioural Science Initiative (BSI)

Chan, D. (2022). Section 377A repeal: How to handle disagreements. The Straits Times, 22 October, 2022. <https://bsi.smu.edu.sg/sites/bsi.smu.edu.sg/files/20221022-ST-Section%20377A%20Repeal.pdf>

Invited Address titled “The Psychology of Public Trust”, Singapore Police Force Leadership Group, Singapore 2022. Video of session: <https://youtu.be/eCSSRGWPSP8>



Dean Dulay

Assistant Professor of Political Science

- “Why are Germans losing enthusiasm for helping Ukraine?” in The Washington Post, 25 November 2022
<https://www.washingtonpost.com/politics/2022/11/25/russia-ukraine-energy-europe/>

Thought Leadership



Christine Henderson

Associate Professor of Political Science; Basket Coordinator for Cultures of the Modern World

- Public Lecture titled “The United States After Trump”, Festival of Freedom organised by Netaji Research Bureau, 6 August 2022



Hoe Su Fern

Assistant Professor of Arts and Culture Management

- Invited presentation: Hoe, S.F (2022). “Podcasting Arts Management: How *Backlogues* Came to Be” at Asian Podcast Festival, 3 – 4 December 2022.
- Hoe, S.F. (2022). “Singapore – From Cultural Desert to Global Art City,” For Westpac Asian Exchange Scholars , 21 September 2022.



Devin Joshi

Associate Professor of Political Science; Lee Kong Chian Fellow

- Keynote speech titled “How to Increase Substantive Representation of Women in Parliaments in Asia.” Asian Women Parliamentarian Caucus Meeting, 23 – 25 November 2022



Angela Leung

Professor of Psychology;
Chair, SMU Institutional Review Board

- Invited presentation titled “The cultivated nutrition: Public perception and consumer acceptance of cell-based food.” FHA-Food & Beverage, September 2022



David Ocon

Assistant Professor of Arts and Cultural Management (Practice)

- Invited panelist at Asia-Europe Foundation (ASEF) Roundtable: Recalibrating the Compass | Cultural Heritage and Tourism in Post-pandemic International Cooperation, 31 August 2022
- Interviewed for Phys.Org, “Saving Cultural Memory in Digital Form”. 29 August 2022 <https://phys.org/news/2022-08-cultural-memory-digital.html>



William Tov

Associate Professor of Psychology;
Deputy Director, Centre for Research on Successful Ageing (ROSA)

- Invited keynote presentation titled “The value of a holistic approach to healthy ageing”. Growth Asia Summit, 11 October 2022



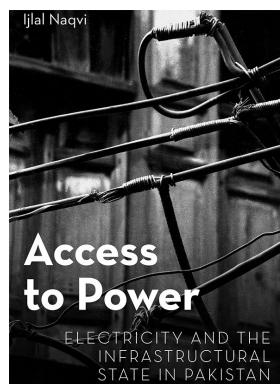
Frances Wang

Assistant Professor of Political Science

- Invited talk “A China-Led World Order?” Bucerius Summer School on Global Governance, Hamburg, Germany, 17 August 2022

SOSS Research at a glance

Activities	Numbers (Jul - Dec 2022)
Journal publications	39
Other publications	18
Events – Public Lectures, Invited Talks, Seminars, etc	39
Conference presentations	17
Research grants (Project start date: Jul – Dec 22)	5 (\$\$711,705)



Access to Power:
Electricity and the Infrastructural State in Pakistan
Oxford University Press, 2022



Ijlal Naqvi

Associate Professor of
Sociology;
Associate Dean
(Curriculum and Teaching)

Pakistan would desperately like to produce enough electricity, but it usually doesn't. Despite prioritization by successive governments, targeted reforms shaped by international development actors, and featuring prominently in Chinese Belt and Road investments, the Pakistani power sector continues to stifle economic and social life across the country. Why?

In *Access to Power*, Ijlal Naqvi explores state capacity in Pakistan by following the material infrastructure of electricity across the provinces and down into cities and homes. Naqvi argues that the national-level challenges of crippling budgetary constraints and power shortages directly result from conscious strategic decisions that are integral to Pakistan's infrastructural state. As he shows, electricity governance in Pakistan reinforces unequal relations of power between provinces and the federal center, contributes to the marginalization of subordinate groups in the city, and cements the patronage-based relationships between Pakistani citizens and the state that have been so detrimental to development progress.

Looking through the lens of the electrical power sector, *Access to Power* reveals how Pakistan actually works, and to whose benefit.

<https://www.worldscientific.com/worldscibooks/10.1142/13037#t=aboutBook>

Publication Highlights – Journal Articles

Validated Journal Articles (1 Jul – 31 Dec 22) extracted from IRIS Publications on 9 Jan 23

Humanities

Lily Kong

Woods, O., & Kong, L. (2022). The Partial Secularisms of Singapore’s Muslim Minorities: Arbitrating Model Citizenship and (In) Complete Selves at the Margins. *Annals of the American Association of Geographers*, 1-19.

Gao, Q., Woods, O., Kong, L., & Shee, S. Y. (2022). Lived religion in a digital age: technology, affect and the pervasive space-times of ‘new’religious praxis. *Social & Cultural Geography*, 1-20.

Gao, Q., Woods, O., & Kong, L. (2022). Squeezed out by the market, seeking strength in the network: Makeshift temples and the spatio-affective logics of survival in Singapore. *Transactions of the Institute of British Geographers*.

Matthew Hammerton

Hammerton, M., & Patra, S. (2022). What is the Fallacy of Approximation?. *Erkenntnis*, 1-20.

Shane Ryan

Kwok, C. H., Ryan, S., & Mi, C. (2022). An Epistemological Disjunctivist Account of Memory Knowledge. *Episteme*, 1-14.

Ryan, S. (2022). Regret Is Born Where Choice Dies. *Philosophical Papers*, 51(2), 319-332.

Charlotte Setijadi

Stenberg, J., Kung, C. W., & Setijadi, C. (2022). From Pulau to Pulo: Archipelagic perspectives on Southeast Asian Chinese ethnicity from the Philippines and Indonesia. *Asian Ethnicity*, 1-6.



Lily Kong

SMU President;
Lee Kong Chian
Chair Professor of
Social Sciences



Matthew Hammerton

Assistant Professor
of Philosophy



Shane Ryan

Assistant Professor of
Philosophy (Education)



Charlotte Setijadi

Assistant Professor
Humanities (Education)

Publication Highlights – Journal Articles

Validated Journal Articles (1 Jul – 31 Dec 22) extracted from IRIS Publications on 9 Jan 23

Political Science

John Donaldson

Hu, Z., Zhang, Q. F., & Donaldson, J. (2022). Why do farmers' cooperatives fail in a market economy? Rediscovering Chayanov with the Chinese experience. *The Journal of Peasant Studies*, 1-31.

Colm Fox

Fox, C. A. (2022). Visualizing politics in Indonesia: The design and distribution of election posters. *International Journal of Communication*, 16, 4187.

Fox, C. A. (2022). Ethnic Campaign Appeals: To Bond, Bridge, or Bypass?. *Political Communication*, 1-23.

Devin Joshi

Joshi, D. (2022). From guo to tianxia: linking two Daoist theories of International Relations. *International Relations of the Asia-Pacific*.

Joshi, D. K. (2022). Daoist political ecology as green party ideology: the case of the Swedish Greens. *Nature and Culture*, 17(3), 288-313.

Jacob Ricks

Ricks, J. I. (2022). Politically Speaking: Ethnic Language and Audience Opinion in Southeast Asia. *Journal of East Asian Studies*, 1-23.

Ricks, J. I. (2022). The politics of institutional reform: Vulnerability and bureaucratic independence in Southeast Asian agriculture. *Asian Politics & Policy*, 14(3), 351-373.



John Donaldson
Associate Professor
of Political Science



Colm Fox
Assistant Professor
of Political Science



Devin Joshi
Associate Professor of
Political Science;
Lee Kong Chian Fellow



Jacob Ricks
Associate Professor of
Political Science
Ian R. Taylor Visiting
Fellow

Publication Highlights – Journal Articles

Validated Journal Articles (1 Jul – 31 Dec 22) extracted from IRIS Publications on 9 Jan 23

Psychology

Cheng Chi-Ying

Choi, H., Cheng, C.-Y., & Wee, S. X. R. (2022). The impact of fear of losing out (FoLO) on college students' performance goal orientations and learning strategies in Singapore. *Social Psychology of Education*, 25, 1351–1380.

Kimin Eom

Leong, S., Eom, K., Ishii, K., Aichberger, M. C., Fetz, K., Müller, T. S., ... & Sherman, D. K. (2022). Individual costs and community benefits: Collectivism and individuals' compliance with public health interventions. *PLoS One*, 17(11), e0275388.

Ramos, J., Grant, M. D., Dickert, S., Eom, K., Flores, A., Jiga-Boy, G. M., ... & Van Boven, L. (2022). Structured reflection increases intentions to reduce other people's health risks during Covid-19. *PNAS Nexus*.

Andree Hartanto

Chua, K. Q., Ng, R., Sung, C. L., Hartanto, A., Oh, V., & Tong, E. M. (2022). Relationship between contentment and working memory capacity: experimental and naturalistic evidence. *Current Psychology*, 1-16.

Hartanto, A., Lee, K. Y., Chua, Y. J., Quek, F. Y., & Majeed, N. M. (2022). Smartphone use and daily cognitive failures: A critical examination using a daily diary approach with objective smartphone measures. *British Journal of Psychology*.

Hartanto, A., Wong, J., Lua, V. Y., Tng, G. Y., Kasturiratna, K. S., & Majeed, N. M. (2022). A Daily Diary Investigation of the Fear of Missing Out and Diminishing Daily Emotional Well-Being: The Moderating Role of Cognitive Reappraisal. *Psychological Reports*, 00332941221135476.

Delios, A., Clemente, E. G., Wu, T., Tan, H., Wang, Y., Gordon, M., ..., Hartanto, A., ..., & Uhlmann, E. L. (2022). Examining the generalizability of research findings from archival data. *Proceedings of the National Academy of Sciences*, 119(30), e2120377119.

Dorison, C. A., Lerner, J. S., Heller, B. H., Rothman, A. J., Kawachi, I. I., Wang, K., ..., Hartanto, A., ..., & Pantazi, M. (2022). In COVID-19 health messaging, loss framing increases anxiety with little-to-no concomitant benefits: Experimental evidence from 84 countries. *Affective science*, 3(3), 577-602.

Ng, M. H., Lua, V. Y., Majeed, N. M., & Hartanto, A. (2022). Does trait self-esteem serve as a resilience factor in maintaining affective well-being? Findings from daily diary studies in Singapore and the United States. *Personality and Individual Differences*, 198, 1.



Cheng Chi-Ying

Associate Professor of Psychology;
Lee Kong Chian Fellow;
Advisor, SMU Institutional Review Board



Kimin Eom

Assistant Professor of Psychology



Andree Hartanto

Assistant Professor of Psychology (Education);
Lee Kong Chian Fellow

Publication Highlights – Journal Articles

Validated Journal Articles (1 Jul – 31 Dec 22) extracted from IRIS Publications on 9 Jan 23

Psychology

Andree Hartanto

Ng, W. Q., & Hartanto, A. (2022). The effect of executive function on the development of chronic pain: A prospective longitudinal study. *Social Science & Medicine*, 314, 115478.

Koh, J., Tng, G. Y., & Hartanto, A. (2022). Potential and pitfalls of mobile mental health apps in traditional treatment: An umbrella review. *Journal of Personalized Medicine*, 12(9), 1376.

Hartanto, A., Kaur, M., Kasturiratna, K. S., Quek, F. Y., & Majeed, N. M. (2022). A critical examination of the effectiveness of gratitude intervention on well-being Outcomes: A within-person experimental daily diary approach. *The Journal of Positive Psychology*, 1-16.

Hartanto, A., Kasturiratna, K. S., & Soh, X. C. (2022). Cultivating positivity to achieve a resilient society: A critical narrative review from psychological perspectives. *Knowledge*, 2(3), 443-451.

Wong, J., Yi, P. X., Quek, F. Y., Lua, V. Y., Majeed, N. M., & Hartanto, A. (2022). A four-level meta-analytic review of the relationship between social media and well-being: a fresh perspective in the context of COVID-19. *Current Psychology*, 1-15.

Angela Leung

Sibo-Ingrid, H., Liou, S., Koh, B., & Leung, A. K. Y. (2022). The role of argumentation on high-and low-creative performing groups: A structuration analysis of undergraduate students' groups discussion. *Thinking Skills and Creativity*, 101217.

Norman Li

Pick, C. M., Ko, A., Kenrick, D. T., Wiezel, A., Wormley, A. S., Awad, E., ... & Varnum, M. E. (2022). Fundamental social motives measured across forty-two cultures in two waves. *Scientific data*, 9(1), 1-12.

Colarelli, S. M., Mirando, T. J., Han, K., Li, N. P., Vespi, C., Klein, K. A., & Fales, C. P. (2022). Responses to COVID-19 Threats: An Evolutionary Psychological Analysis. *Evolutionary Psychological Science*, 1-11.

Yong, J. C., & Li, N. P. (2022). Elucidating evolutionary principles with the traditional Mosuo: Adaptive benefits and origins of matriliney and "walking marriages". *Culture and Evolution*, 19(1), 22-40.



Angela Leung

Professor of Psychology;
Chair, SMU Institutional
Review Board



Norman Li

Professor of Psychology

Publication Highlights – Journal Articles

Validated Journal Articles (1 Jul – 31 Dec 22) extracted from IRIS Publications on 9 Jan 23

Psychology

Jacinth Tan

Ku, C. W., Leow, S. H., Ong, L. S., Erwin, C., Ong, I., Ng, X. W., ... & Loy, S. L. (2022). Developing a lifestyle intervention program for overweight or obese preconception, pregnant and postpartum women using qualitative methods. *Scientific reports*, 12(1), 1-9.

Kenneth Tan

Lai, G. J., Tan, K., Tan, M., Cheong, G., Cheng, C., & Mathew, M. (2022). Dyadic positive and negative religious coping among older Singaporean couples and marital satisfaction. *Journal of Family Psychology*.

Tan, K., Jarnecke, A. M., & South, S. C. (2022). Social Anhedonia, Communication and Marital Satisfaction in Newlywed Couples. *Journal of Personality*.

Tsai Ming-Hong

Tsai, M. H. (2022). Can conflict cultivate collaboration? The positive impact of mild versus intense task conflict via perceived openness rather than emotions. *Journal of Experimental Psychology: Applied*.

Yang Hwajin

Khoo, S. S., & Yang, H. (2022). Resisting problematic smartphone use: Distracter resistance strengthens grit's protective effect against problematic smartphone use. *Personality and Individual Differences*, 194, 111644.



Jacinth Tan
Assistant Professor
of Psychology



Kenneth Tan
Assistant Professor
of Psychology



Tsai Ming-Hong
Associate Professor
of Psychology



Hwajin Yang
Associate Professor of
Psychology;
PGR Coordinator;
Lee Kong Chian Fellow

Publication Highlights – Journal Articles

Validated Journal Articles (1 Jul – 31 Dec 22) extracted from IRIS Publications on 9 Jan 23

Sociology

Cheng Cheng

Lai, G. J., Tan, K., Tan, M., Cheong, G., Cheng, C., & Mathew, M. (2022). Dyadic positive and negative religious coping among older Singaporean couples and marital satisfaction. *Journal of Family Psychology*.

Paulin Straughan

Straughan, P. T., & Xu, C. (2022). Parents' Knowledge, Attitudes, and Practices of Childhood Obesity in Singapore. *SAGE Open*, 12(4), 21582440221144436.

Yasmin Ortiga

Xiang, B., Allen, W. L., Khosravi, S., Neveu Kringelbach, H., Ortiga, Y. Y., Liao, K. A. S., ... & Naik, M. (2022). Shock mobilities during moments of acute uncertainty. *Geopolitics*, 1-26.

Forrest Zhang

Hu, Z., Zhang, Q. F., & Donaldson, J. (2022). Why do farmers' cooperatives fail in a market economy? Rediscovering Chayanov with the Chinese experience. *The Journal of Peasant Studies*, 1-31.



Cheng Cheng

Assistant Professor of
Sociology;
Lee Kong Chian Fellow



Paulin Straughan

Dean of Students;
Professor of
Sociology (Practice);
Director, Centre for
Research on
Successful Ageing
(ROSA)



Yasmin Ortiga

Assistant Professor
of Sociology



Qian Forrest Zhang

Associate Professor
of Sociology;
Associate Dean
(Research)

SOSS Research Camp

11 November 2022



**PRESENTATION BY FORREST ZHANG, ASSOCIATE PROFESSOR OF SOCIOLOGY;
ASSOCIATE DEAN (RESEARCH)**

From agro-industrial commodity chain to rural-urban food linkage: Sustainable alternatives in China's food system

The food system in today's China is structured around agro-industrial commodity chains. Rural producers and urban consumers are connected only through distant commodity relations but having no social interactions; agricultural producers and rural communities are subjected to the extraction by urban and industrial capital, while the rural ways of life are devalued in the urban-dominant cultural imaginaries. For decades, various stakeholders have been searching for and experimenting with more sustainable alternatives. I examine two exemplary yet distinctive cases and comparatively evaluate their impact on rural/urban communities and the food system. Both have successfully created a new form of rural-urban relationship, which I call "rural-urban food linkage" and is based on collaborative and sustainable food practices. There are also significant differences. One, the Riverbend Cooperative, was led by a team of rural women and now directly distribute organic foods to urban members of the cooperative; the other, the Little Donkey Farm, was established by urban activists and brought urban residents to participate in organic farming. Further, while Riverbend systematically rejected the productivist agricultural model, minimized commodity relations and integrated urban members into the rural community, Little Donkey embraced commodity relations and mobilized urban resources to transform rural space. I argue that Riverbend presents a more radical, "anti-productivist" alternative, has greater transformative impact on the rural community, but is highly difficult to replicate; Little Donkey, on the other hand, offers a "post-productivist" alternative that intensifies the urban consumption of rural space but is more replicable and sustainable as a business model.

PRESENTATION BY KIMIN EOM, ASSISTANT PROFESSOR OF PSYCHOLOGY

The Role of Perceived Others' Motives in Moral Norm Inferences from Descriptive Norms

The present research examines how people's inferences about moral norms from descriptive norms change by perceived others' motives in the context of environmental behavior. When people think that many others engage in environmental behavior for prosocial (vs. proself) motives, they infer that the behavior has been moralized in society. They infer stronger injunctive norms, expect others to experience greater moral outrage at norm-inconsistent behaviors, and expect others to engage in the behavior more consistently across different contexts. These moral norm perceptions, in turn, lead to people's greater motivation to engage in environmental behavior themselves. Together, these findings demonstrate that perceived others' motives significantly affect people's construals of descriptive norms and motivation to engage in normative behavior.



SOSS Research Camp

11 November 2022



**PRESENTATION BY ISHANI MUKHERJEE, ASSOCIATE PROFESSOR OF PUBLIC POLICY;
PROGRAM COORDINATOR: PUBLIC POLICY & PUBLIC MANAGEMENT (PPPM) SECOND
MAJOR; LEE KONG CHIAN FELLOW**

Public Adaptive Capacity for Policy Design: A focus on Environmental Disease Responses

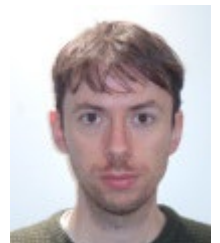
In the literature on policy design – or how policy instruments are devised to meet complex policy goals - the topic of policy compliance has been dealt with mainly in terms of economic, incentive-driven motivations. That is, until recently. A pronounced turn towards behavioral public policy over the last two decades and evolving sociologically driven explanations of how individuals and communities (ie. the public) interact with public policy, has diversified the set of possible propositions that are available for policy design scholars to study policy targets. Even in its nascent stages, looking beyond traditional compliance-deterrence logics during the creation of policy instruments and engendering other socio-cultural and psychological considerations such as appropriateness, legitimacy and blame-avoidance, have been repeatedly shown to lead to more effective policy design processes than focusing on incentives alone. While this broad range of public behaviors in response to policy have been a significant component in fields such as law and accountancy, they have tended to be glossed over in studies of public policy design, and especially in critical cross-cutting sectors such as public health and environment.

My contribution as PI to a recent National Research Foundation (NRF) grant on public adaptive capacity for environmental diseases, aims to go deeper into these sets of assumptions in the context of Singapore.

PRESENTATION BY SHANE RYAN, ASSISTANT PROFESSOR OF PHILOSOPHY (EDUCATION)

Wisdom

This paper concerns how wisdom should be analysed. More specifically, whether wisdom should be analysed at the level of a single instance, a skill, or a person. The paper begins by explaining and motivating each of the approaches. The case is made that whether an instance should be counted as wise depends on factors that go beyond the instance itself. To count an instance as wise, we first need to know certain things about the relevant agent. This knowledge must go beyond particularities of that agent during that instance. This counts in favour of an approach that looks beyond an instance to determine whether wisdom is present in some form or another. A skill-based approach is examined as an alternative approach. Such an approach seems to avoid the problems that an instance approach faces. The skill-based approach, however, faces problems of its own. According to the approach as act may be counted as wise despite it getting things very wrong. A person-based approach is argued to avoid the problems facing the other approaches. On the one hand, the person-based approach naturally has as its focus the properties of an agent. It goes beyond the skill model, however, in recognising disposition and motivation as necessary components of wisdom.



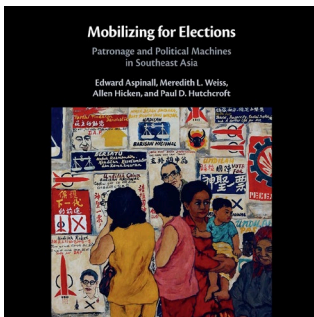


SOSS 15th Anniversary Seminar Series | Singapore Decoupling: Communitarianism and the Challenges of Immigration, Inequality, and Liberalization

Speaker: Alwyn Lim, Associate Professor of Sociology, SOSS, SMU
19 August 2022

SOSS 15th Anniversary Seminar Series | The Crisis of American Democracy: What is it, and is there a Way Out?

Speaker: Stephen Macedo, Laurence S. Rockefeller Professor of Politics and the University Center for Human Values
26 August 2022



SOSS 15th Anniversary Seminar Series | Mobilizing for Elections: Patronage and Political Machines in Southeast Asia

Speaker: Allen Hicken, Professor of Political Science, University of Michigan
2 September 2022

A cognitive hierarchy model of human behaviors for taxi and ride-hailing drivers

Speaker: Cheng Shih-Fen, Associate Professor of Computer Science, SCIS, SMU
6 September 2022



Are You Thai? Ethnic Identity Markers and National Identity in Thailand

Speaker: Jacob Ricks, Associate Professor of Political Science, SOSS, SMU

13 September 2022



Migration, Education, and Cultural Capital in the Post-Pandemic World

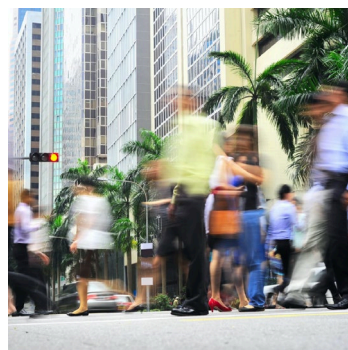
Speaker: Hiroki Igarashi, Assistant Professor of Sociology, Chiba University

14 September 2022

SOSS 15th Anniversary Seminar Series | The Psychology of Trust Amid Challenges: Why and How Public Trust Matters

Speaker: David Chan, Professor of Psychology, SOSS, SMU

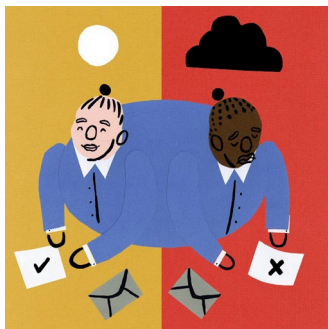
16 September 2022



Integrate or Isolate? Clarifying the link between social class and relational interdependence

Speaker: Jacinth Tan, Assistant Professor of Psychology

20 September 2022



SOSS 15th Anniversary Seminar Series | What is Racial Privilege?

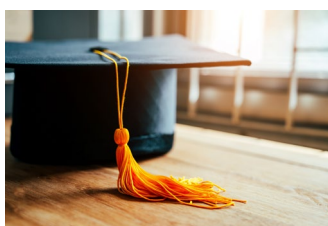
Speaker: Matthew Hammerton, SOSS, SMU

23 September 2022

Family Change and Inequality: “Diverging Destinies” in Japan?

Speaker: James Raymo, Professor of Sociology, Princeton University, Henry Wendt III '55 Professor of East Asian Studies

29 September 2022



Bias, Fairness, and Validity in Graduate Admissions

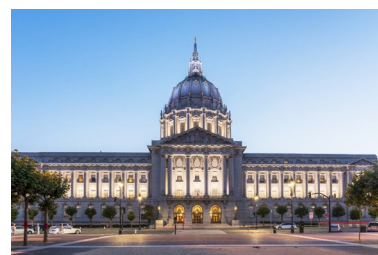
Speaker: Louis Tay, Associate Professor, Purdue University

11 October 2022

Sorry Not Sorry: Blame Avoidance Strategies and Support for Corrupt Politicians in the United States

Speaker: Dean Dulay, Assistant Professor of Political Science & Seulki Lee, Assistant Professor of Public Policy, SOSS, SMU

11 October 2022



Your past is my present

Speaker: Anil Menon, Klarman Postdoctoral Fellow, Cornell University
25 October 2022

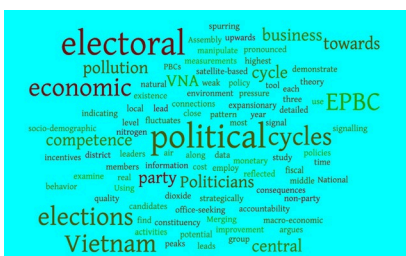


The Spatial Organization of Inequality

Speaker: Marco Garrido, Associate Professor of Sociology, University of Chicago
26 October 2022

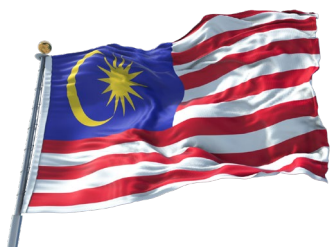
How do we express conflicts beneficially? Perspectives from social perception and emotion

Speaker: Tsai Ming-Hong, Associate Professor of Psychology, SOSS, SMU
1 November 2022



The impact of political business cycles on the environment – Evidence from Vietnam

Speaker: Quynh Nguyen, Senior Lecturer, Australian National University
4 November 2022



Authoritarian Legislative Behavior amid Declining Electoral Dominance: Evidence from Malaysia

Speaker: Sebastian Dettman, Assistant Professor of Political Science, SOSS, SMU & Paul Schuler, Associate Professor of Political Science, University of Arizona

9 November 2022

Multinaturalism in Vaccine Hesitancy: Envisioning the Cosmopolitics of Health in a Syndemic World

Speaker: Hiro Saito, Associate Professor of Sociology, SOSS, SMU

15 November 2022



***Stuck at Home*, Book Manuscript Workshop**

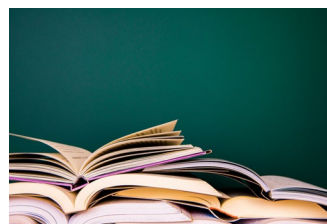
Organizer: Yasmin Ortiga, Assistant Professor of Sociology, SOSS, SMU

21 November 2022

The Sixth Asian Workshop on Cultural Economics

Organizer: Hoe Su Fern, Assistant Professor of Arts and Culture Management, SOSS, SMU

7 – 9 December 2022



Faculty Spotlight



Jacynth Tan

Assistant Professor of Psychology

Jacynth is a social psychologist who studies how the objective and subjective experiences of one's social class shape daily thought patterns, behaviours, health and subjective well-being. In her research, she captures thought patterns and behaviours comprehensively by combining self-report measures with behavioural and physiological assessments.

Jacynth currently pursues two key lines of work. The first line investigates how the effects of social class on health and well-being varies with social contexts and psychosocial factors. In one work, she found that social class gaps in subjective well-being tend to be stronger in contexts that heighten relative comparisons, such as higher population density and higher relative mobility. In another, she found that social class differences in self-rated health were mitigated when individuals held social constructivist rather than essentialist views of their social class membership.

Her second line of work examines how people of different social class backgrounds relate to and interact with others. For instance, using physiological methods to track continuous attention in a dyadic lab interaction, she observed that lower social class individuals were more withdrawn but also more attentive to interaction partners than higher social class individuals. In an ongoing work, she is studying how such class differences in interpersonal attention may manifest in daily school interactions between first-generation and continuing-generation university students in Singapore, and how this may create gaps in campus belonging and achievement motivation.



Frances Wang

Assistant Professor of Political Science

Frances is interested in three thematic areas and one regional focus in International Security. Her main research focus is the role of authoritarian media during interstate conflicts. Closely related to this is authoritarianism and state manipulation of public opinion. Her book, *The Dog That Barks: China's Management of Mass Opinion during Interstate Disputes*, is currently under review at the Oxford University Press. It explores why and how authoritarian states manage public opinion through media campaigns in interstate conflicts. In a paper published in *Security Studies*, she elaborates the rationale of pacification media campaigns and illustrate it with the 2016 Sino-Philippines arbitration case over the South China Sea issue. In an upcoming *International Studies Quarterly* article, she examines competing theories on authoritarian propaganda in international conflicts and attempts to reconcile the debate in the literature.

Second, she has branched out from the first focus to public opinion in conflicts, moving from the motivations to the effects of media manipulations. On this topic, she is now revising a paper based on original survey experiments in China, Vietnam and the Philippines to assess the effects of various media messages on public opinion using hypothetical South China Sea conflict scenarios. She is also working on a project that studies the relationship between the American public's racial attitudes towards ethnic Chinese and their foreign policy preference toward China using two survey experiments in the United States.

Thirdly, she is interested in the combination of official propaganda with modern information and communication technologies. On this, she is working on a paper that analyzes Chinese diplomats' tweets with machine learning text analysis of over 140,000 tweets by Chinese diplomats. She is also developing a second book that investigates the practices and effects of Chinese outsourced propaganda operations and local supply chains in the Indo-Pacific.

Last but not least, she has devoted special attention to the connections between China and Vietnam and China and the Philippines throughout the aforementioned three thematic areas and has developed an area expertise in China and Southeast Asia. In a *Journal of Contemporary China* article, she analyzes the Chinese and Vietnamese media strategies during the oil rig crisis between China and Vietnam in 2014. She is working on a paper that explains the fluctuating frequency of China's maritime incursions in the waters surrounding the Senkaku/Diaoyu Islands using an original dataset extracted from Japanese Coast Guard reports.

Achievements – Awards/Recognitions



Kimin Eom
Assistant Professor
of Psychology

- ❖ Editorial fellow for the *Journal of Experimental Psychology: General*



Andree Hartanto
Assistant Professor of
Psychology (Education);
Lee Kong Chian Fellow

- ❖ Recipient of the SMU-Educational Research Fellowship 2022



Hoe Su Fern
Assistant Professor of
Arts and Culture
Management

- ❖ Backlogues: An Arts Management Podcast with Centre 42 and Sing Lit Station was a finalist for the Best Arts, Society and Culture Podcast in Asia 2022



Forrest Zhang
Associate Professor
of Sociology;
Associate Dean
(Research)

- ❖ Co-Editor of the *Journal of Agrarian Change* (01/01/2023 --).

Achievements - Awards

Lee Kong Chian Professorship



Lee Kong Chian Fellowship



Cheng Cheng

Assistant Professor of Sociology;
Lee Kong Chian Fellow



Cheng Chi-Ying

Associate Professor of Psychology;
Lee Kong Chian Fellow;
Advisor, SMU Institutional Review Board



Devin Joshi

Associate Professor of Political Science;
Lee Kong Chian Fellow



Alwyn Lim

Associate Professor of Sociology;
Lee Kong Chian Fellow



Seulki Lee

Assistant Professor of Public Policy;
Lee Kong Chian Fellow

Research Projects Awarded Jul – Dec 2022

MOE Academic Research Fund Tier 1



PI: **Alwyn Lim**, Associate Professor of Sociology, Lee Kong Chian Fellow
Project title: Communitarianism in Singapore: Examining the Challenges of Immigration, Inequality, and Liberalization



PI: **David Ocon**, Assistant Professor of Arts and Cultural Management (Practice)
Project title: Nature and the Heritage of Cemeteries: Sustainable Synergies to Preserve Both



PI: **Kenneth Tan**, Assistant Professor of Psychology
Project title: The role of paradox mindset on ambivalence in romantic relationships

Achievements - Promotion

The School of Social Sciences is delighted to announce the following promotion:

**Promotion to Associate Professor
with effect from January 2023**



Steven Burik
Associate Professor of Philosophy (Education)
Office: #05-03
Tel: 6828 0866
Email: stevenburik@smu.edu.sg