

# SOSS Insights

A newsletter of the SMU School of Social Sciences

Issue 1, February 2021

## Contents

Welcome message	1
Thought Leadership	2-3
SOSS Research at a glance	4
Publication Highlights Books & Articles	5-15
Events	16-17
Faculty Spotlight	18
Achievements- Awards & Promotions	19-20



Welcome to the first issue of SOSS Insights, the research newsletter of the SMU School of Social Sciences!

2020 was a trying year. We had the stresses that came with election night(s), the tedium and frustrations that lockdowns provoked, and how we missed the calming experience of pre-flight shopping in Changi Airport. For many of us, the search for a substitute for *Game of Thrones* proved quite fruitless. All that said, 2020 was nonetheless a successful year for the School. In these pages can be found evidence of the (quite different) fruit of our labours. We have been busy. Is it too much to expect that some of this research will go viral?

In any event, we anticipate that 2021 will be even more productive and look forward to updating you on our efforts in the next issue of SOSS Insights.

**Professor Chandran Kukathas**  
**Lee Kong Chian Chair Professor of Political Science**  
**Dean, School of Social Sciences**

Singapore Management University  
School of Social Sciences  
90 Stamford Road, Level 4  
Singapore 178903  
[www.socsc.smu.edu.sg](http://www.socsc.smu.edu.sg)  
Email: [socsc@smu.edu.sg](mailto:socsc@smu.edu.sg)  
Tel: +65 6828 1976

 @SMUSOSS

 @sgSMUSOSS

# Thought Leadership



**David Chan**

Professor of Psychology;  
Director, Behavioural  
Sciences Institute

The year 2020 will be remembered for the COVID-19 global pandemic. In Singapore's combat with the pandemic, Professor David Chan (Director, Behavioural Sciences Institute) has been among the most visible intellectuals providing thought leadership in the country. In addition to his book, *Combating a Crisis* (highlighted in the Publication Highlights section), Professor Chan has also received the Merit Award (Best Commentary) for the article "[The 5Cs of beating the coronavirus outbreak](#)" published in The Straits Times at the inaugural Stories of A Pandemic (SOAP) Awards 2020, organised by The Majority Trust to recognise contributions by writers, photographers and artists who provided impactful stories related to the Covid-19 pandemic. The following list documents the public talks, panel discussions, newspaper articles, and media interviews on the pandemic that Professor Chan has contributed to in the past year.

- Invited talk titled Enhancing Worker Well-being in the COVID-19 World. Online Forum, The Singapore Workplace Safety and Health (WSH) Conference, WSH Council, Singapore, 2020.
- Invited Panelist, New thinking for the new world: Living with the pandemic, Online Forum, National Library Board, Singapore, 2020.
- Invited Panelist, Bouncing Back from COVID-19. IPS Online Forum, Institute of Policy Studies, Singapore, 2020.
- Invited talk titled Understanding social behaviours and enhancing social responsibility. Covid-19 Webinar, Society for Behavioural Health, Singapore, 2020.
- Chan, D. (2020). Foster positivity amid Covid-19 challenges. The Straits Times, 1 August, 2020.
- Chan, D. (2020). How to make critical decisions amid Covid-19 pressures. The Straits Times, 4 July, 2020.
- Chan, D. (2020). A toolkit to deal with negative reactions in the Covid-19 crisis. The Straits Times, 25 April, 2020.
- Chan, D. (2020). Drawing on the S'pore can-do spirit. The Straits Times, 5 April, 2020.
- Chan, D. (2020). Drill into what makes people socially responsible. The Straits Times, 14 March, 2020.
- Chan, D. (2020). The 5Cs of beating the coronavirus outbreak. The Straits Times, 15 February, 2020.
- Chan, D. (2020). (The Big Story) Mental battle against Covid-19 as psychological fatigue sinks in. Interview, The Big Story, The Straits Times, 2020.
- Chan, D. (2020). COVID Q&A. Interview, The COVID Q&A, CNA938, 2020.
- Chan, D. (2020). (The Big Story) "Circuit Breaker": Don't expect immediate results. Interview, The Big Story, The Straits Times, 2020.
- Chan, D. (2020). (The Big Story) Coronavirus: Social responsibility key to curbing spread. Interview, The Big Story, The Straits Times, 2020.
- Chan, D. (2020). Total Defence will help Singapore get through coronavirus crisis. Interview, Singapore Tonight, Channel NewsAsia, 2020.
- Chan, D. (2020). (The Big Story) Coronavirus: Panic buying and its impact. Interview, The Big Story, The Straits Times, 2020.



**Professor Chandran Kukathas**  
**Lee Kong Chian Chair Professor of Political Science**  
**Dean, School of Social Sciences**

**Public lectures delivered by SOSS Dean, Lee Kong Chian Chair Professor of Political Science, Chandran Kukathas:**

- 5 March 2020, 'Immigration and Freedom', Public Lecture at the Fundación Rafael del Pino, Madrid
- 6 March 2020, 'Immigration and Multiculturalism', Public Discussion at LibertyCon 2020, Madrid
- 29 May 2020, 'The Liberal Archipelago: An Introduction', Instituto Juan de Mariana, Madrid (online)
- 2 June 2020, 'On Freedom', at the Research Colloquium of Political Theory' at the Institut für Politikwissenschaft, Goethe Universität, Frankfurt (online)
- 24 June 2020, 'Immigration and Freedom', Institute of Economic Affairs (London) Webinar Series. (online)
- 2 July 2020, Discussant on a panel on Domenico Melidoro's *Dealing with Diversity*, Centre for Ethics, Politics and Society, University of Minho, Portugal (online)
- 2 October 2020, 'Immigration and Freedom', Yale-NUS Philosophy Research Colloquium. (online)

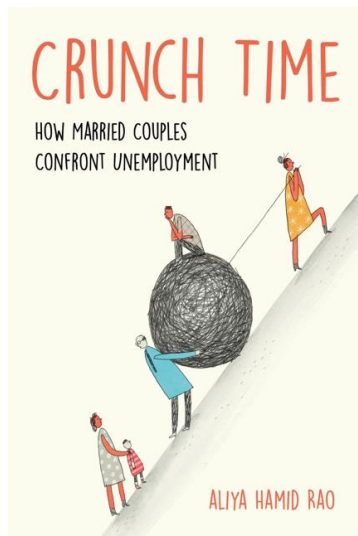
# SOSS Research at a glance

Activities	Numbers (Jan – Dec 2020)
Journal publications	83
Other publications	42
Events – Public Lectures, Invited Talks, Seminars, etc	28
Conference presentations	8
Research grants awarded	9 (\$\$12.3 million)

# Publication Highlights - Books

## Crunch Time: How Married Couples Confront Unemployment

(University of California Press, June 2020)



In *Crunch Time*, Aliya Rao gets up close and personal with college-educated, unemployed men, women, and spouses to explain how comparable men and women have starkly different experiences of unemployment. Traditionally gendered understandings of work—that it's a requirement for men and optional for women—loom large in this process, even for marriages that had been not organized in gender-traditional ways. These beliefs serve to make men's unemployment an urgent problem, while women's unemployment—cocooned within a narrative of staying at home—is almost a non-issue. *Crunch Time* reveals the minutiae of how gendered norms and behaviors are actively maintained by spouses at a time when they could be dismantled, and how gender is central to the ways couples react to and make sense of unemployment.



**Aliya Hamid Rao**  
Assistant Professor  
of Sociology

<https://www.ucpress.edu/book/9780520298613/crunch-time>

## Combating a Crisis: The Psychology of Singapore's Response to COVID-19

(World Scientific, July 2020)

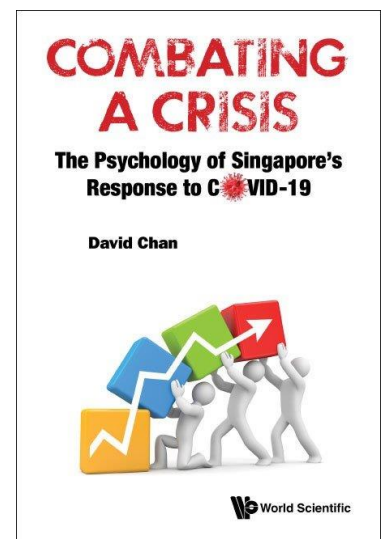


**David Chan**  
Professor of Psychology;  
Director, Behavioural  
Sciences Institute

In this first book about Singapore's experiences in the COVID-19 pandemic, Professor David Chan examines Singapore's reaction and response to the coronavirus and draws lessons for crisis management, psychological preparedness, and adaptability. Consisting of 12 chapters, the book is organized into three parts.

This book was cited in the Singapore Parliament Debate on Strategy to Emerge Stronger from COVID-19 and in the Singapore Parliament Debate on COVID-19 Temporary Measures Amendment Bill.

<https://www.worldscientific.com/worldscibooks/10.1142/11836>

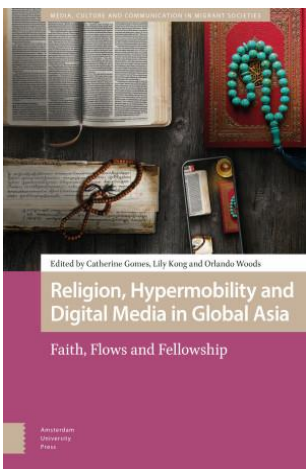


# Publication Highlights - Books

## Religion, Hypermobility and Digital Media in Global Asia: Faith, Flows and Fellowship

(Amsterdam University Press, September 2020)

Edited by Catherine Gomes



This edited volume features cutting edge research by scholars across disciplines seeking to understand the role and significance of religion among transnational mobile subjects in this age of digital media, and in particular, as experienced in Global Asia. Digital media is changing the ways in which religion is practiced, understood, proselytised and countered. Migrant and mobile subjects are able to be connected to their faith wherever they may be, providing them with an anchor in unfamiliar physical and cultural surroundings. As Asia rises, mobilities associated with Asian populations have escalated. The notion of 'Global Asia' is a reflection of this increased mobility, where Asia includes not only Asian countries as sites of political independence, but also the transnational networks of Asian trans/migrants, and the diasporic settlements of Asian peoples all over the world.

Hyperlink:

<https://www.aup.nl/en/book/9789463728935/religion-hypermobility-and-digital-media-in-global-asia>



**Lily Kong**  
SMU President;  
Lee Kong Chian  
Chair Professor of  
Social Sciences



**Orlando Woods**  
Associate  
Professor of  
Humanities

# Publication Highlights - Articles

## Humanities

### Steven Burik

Steven Burik (2020) Derrida and Asian Thought, *Comparative and Continental Philosophy*, 12:1, 2-4

### Winston Chow

Wang, J. W., Chow, W. T., & Wang, Y. C. (2020). A global regression method for thermal sharpening of urban land surface temperatures from MODIS and Landsat. *International Journal of Remote Sensing*, 41(8), 2986-3009.

Project Coolbit: Can your watch predict heat stress and thermal comfort sensation?

Nazarian, N., Liu, S., Kohler, M., Lee, J. K. W., Miller, C., Chow, W. T., ... & Norford, L. (2020). Project Coolbit: Can your watch predict heat stress and thermal comfort sensation?. *Environmental Research Letters*.

### Matthew Hammerton

Hammerton, M. (2020). Agent-relative consequentialism and collective self-defeat. *Utilitas*, 32 (4):472 -478

Hammerton, M. (2020). Deontic constraints are maximizing rules. *The Journal of Value Inquiry*, 54(4),. 571-588

### Hoe Su Fern

Hoe, S. F. (2020). Laden with great expectations:(re) mapping the arts housing policy as urban cultural policy in Singapore. *City, Culture and Society*, 21, 100339.

### Lily Kong

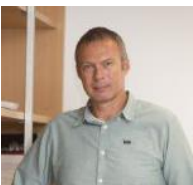
Lee, J. Y., Woods, O., & Kong, L. (2020). Towards more inclusive smart cities: Reconciling the divergent realities of data and discourse at the margins. *Geography Compass*, 14(9), e12504.

Woods, O., & Kong, L. (2020). Parallel spaces of migrant (non-) integration in Singapore: Latent politics of distance and difference within a diverse Christian community. *Journal of Intercultural Studies*, 41(3), 339-354.

De Silva, M., Woods, O., & Kong, L. (2020). Alternative education spaces and pathways: Insights from an international Christian school in China. *Area*, 52(4), 750-757.

Woods, O., & Kong, L. (2020). The spatial subversions of global citizenship education: Negotiating imagined inclusions and everyday exclusions in international schools in China. *Geoforum*, 112, 139-147.

Kong, L., Woods, O., & Zhu, H. (2020). The (de) territorialised appeal of international schools in China: Forging brands, boundaries and inter-belonging in segregated urban space. *Urban Studies*, 0042098020954143.



**Steven Burik**

Assistant Professor  
of Philosophy



**Winston Chow**

Associate Professor  
of Science,  
Technology and  
Society



**Matthew Hammerton**

Assistant Professor  
of Philosophy



**Hoe Su Fern**

Assistant Professor  
of Arts and Culture  
Management



**Lily Kong**

SMU President;  
Lee Kong Chian  
Chair Professor of  
Social Sciences



# Publication Highlights - Articles

## Humanities

### **Ngoei Wen-Qing**

Ngoei, W. Q. (2020). The United States and the “Chinese Problem” of Southeast Asia. *Diplomatic History*.

### **Justin Tse**

Tse, J. (2020). Sing hallelujah to the lord: Secular Christianities on Hong Kong’s Civic Square. *The Immanent Frame*, 15.

### **Fiona Williamson**

Courtney, C., & Williamson, F. (2020). Disasters and the making of Asian history. *Environment and History*, 26(1), 1.

Williamson, F. (2020). The “cultural turn” of climate history: An emerging field for studies of China and East Asia. *Wiley Interdisciplinary Reviews: Climate Change*, 11(3), e635.

Ziegler, A. D., Lim, H. S., Wasson, R. J., & Williamson, F. C. (2020). Flood mortality in SE Asia: can palaeo-historical information help save lives?. *Hydrological Processes*.

Williamson, F. (2020). Responding to extremes: managing urban water scarcity in the late nineteenth-century Straits Settlements. *Water history*, 1-13.

Williamson, F., & Janković, V. (2020). A Question of Scale: Making Meteorological Knowledge and Nation in Imperial Asia. *History of Meteorology*, 9.

### **Orlando Woods**

Lee, J. Y., Woods, O., & Kong, L. (2020). Towards more inclusive smart cities: Reconciling the divergent realities of data and discourse at the margins. *Geography Compass*, 14(9), e12504.

Woods, O. (2020). Experiencing the unfamiliar through mobile gameplay: Pokémon go as augmented tourism. *Area*.

Woods, O. (2020). Free bodies, segmented selves: Paradoxical spaces of dancehall culture in Singapore. *Gender, Place & Culture*, 1-20.



**Ngoei Wen-Qing**  
Assistant Professor  
of Humanities



**Justin Tse**  
Assistant Professor  
of Humanities  
(Education)



**Fiona Williamson**  
Assistant Professor of  
Science, Technology  
and Society



**Orlando Woods**  
Associate Professor  
of Humanities



# Publication Highlights - Articles

## Humanities

### Orlando Woods

Woods, O., & Kong, L. (2020). Parallel spaces of migrant (non-) integration in Singapore: Latent politics of distance and difference within a diverse Christian community. *Journal of Intercultural Studies*, 41(3), 339-354.

De Silva, M., Woods, O., & Kong, L. (2020). Alternative education spaces and pathways: Insights from an international Christian school in China. *Area*, 52(4), 750-757.

Woods, O., & Kong, L. (2020). The spatial subversions of global citizenship education: Negotiating imagined inclusions and everyday exclusions in international schools in China. *Geoforum*, 112, 139-147.

Woods, O. (2020). Subverting the logics of “smartness” in Singapore: Smart eldercare and parallel regimes of sustainability. *Sustainable Cities and Society*, 53, 101940.

Woods, O. (2020). The digital subversion of urban space: Power, performance and grime. *Social & Cultural Geography*, 21(3), 293-313.

Kong, L., Woods, O., & Zhu, H. (2020). The (de) territorialised appeal of international schools in China: Forging brands, boundaries and inter-belonging in segregated urban space. *Urban Studies*, 0042098020954143.

Woods, O. (2021). Forging alternatively sacred spaces in Singapore’s integrated religious marketplace. *cultural geographies*, 28(1), 109-122.

Woods, O. (2020). Affective cosmopolitanisms in Singapore: Dancehall and the decolonisation of the self. *Transactions of the Institute of British Geographers*.

Woods, O. (2020). Clashing cyphers, contagious content: The digital geopolitics of grime. *Transactions of the Institute of British Geographers*.

Woods, O. (2020). The territoriality of teams: Assembling power through the playing of Pokémon Go. *Mobile Media & Communication*, 2050157920968867.

## Political Science

### Sebastian Dettman

Dettman, S. (2020). Authoritarian innovations and democratic reform in the “New Malaysia”. *Democratization*, 27(6), 1037-1052.

Dettman, S., & Gomez, E. T. (2020). Political financing reform: Politics, policies and patronage in Malaysia. *Journal of Contemporary Asia*, 50(1), 36-55.

### John Donaldson

Ho, Y. F., & Donaldson, J. A. (2020). Farmers in Singapore? Collective Action under Adverse Circumstances. *Journal of Contemporary Asia*, 1-27.

# Publication Highlights - Articles

## Political Science

### Ulas Onur Ince

Marwah, I. S., Pitts, J., Vasko, T. B., Ince, O. U., & Nichols, R. (2020). Empire and its afterlives. *Contemporary Political Theory, 19*, 274-305.

### Devin Joshi

Kalra, S., & Joshi, D. K. (2020, September). Gender and parliamentary representation in India: The case of violence against women and children. In *Women's Studies International Forum* (Vol. 82, p. 102402). Pergamon.

Joshi, D. K., & Goehrung, R. (2020). Mothers and Fathers in Parliament: MP Parental Status and Family Gaps from a Global Perspective. *Parliamentary Affairs*.

Joshi, D. K., Hailu, M. F., & Reising, L. J. (2020). Violators, virtuous, or victims? How global newspapers represent the female member of parliament. *Feminist Media Studies, 20*(5), 692-712.

### Inwook Kim

Kim, I. (2020). Swinging Shale: Shale Oil, the Global Oil Market, and the Geopolitics of Oil. *International Studies Quarterly, 64*(3), 544-557.



**Sebastian Dettman**  
Assistant Professor  
of Political Science



**Devin Joshi**  
Associate Professor  
of Political Science



**John Donaldson**  
Associate Professor  
of Political Science



**Inwook Kim**  
Assistant Professor  
of Political Science



**Ulas Onur Ince**  
Associate Professor  
of Political Science

# Publication Highlights - Articles

## Political Science

### Chandran Kukathas

Chandran Kukathas, 'Immigration and Freedom', in Johannes Knolle and James Poskett (eds.), *Migration* (Darwin College Lectures, Series Number 32), Cambridge: Cambridge University Press, 2020, 19-49.

Chandran Kukathas, 'What Price Happiness?', *Robb Report Singapore*, The Happiness Issue, September 2020, 32-37.

### Ishani Mukherjee

Mukherjee, I., & Giest, S. (2020). Behavioural Insights Teams (BITs) and policy change: an exploration of Impact, location, and temporality of policy advice. *Administration & Society*, 52(10), 1538-1561.

### Jacob Ricks

Ricks, J. I., & Doner, R. F. (2021). Getting institutions right: Matching institutional capacities to developmental tasks. *World Development*, 139, 105334.

Ricks, J. I., & Laiprakobsup, T. (2020). Becoming citizens: Policy feedback and the transformation of the Thai rice farmer. *Journal of Rural Studies*.



**Chandran Kukathas**

Lee Kong Chian Chair Professor  
of Political Science  
Dean, School of Social Sciences



**Ishani Mukherjee**

Assistant Professor  
of Public Policy



**Jacob Ricks**

Associate Professor  
of Political Science

## Psychology

### Cheng Chi-Ying

Cheng, C. Y., Hanek, K. J., Odom, A. C., & Lee, F. (2020). Divided Loyalties: Identity Integration and Cultural Cues Predict Ingroup Favoritism Among Biculturals. *International Journal of Intercultural Relations*.

### Kimin Eom

Eom, K., Saad, C. S., & Kim, H. S. (2020). Religiosity moderates the link between environmental beliefs and pro-environmental support: The role of belief in a controlling god. *Personality and Social Psychology Bulletin*, 0146167220948712.

Lawrie, S. I., Eom, K., Moza, D., Gavreliuc, A., & Kim, H. S. (2020). Cultural Variability in the Association Between Age and Well-Being: The Role of Uncertainty Avoidance. *Psychological science*, 31(1), 51-64.

# Publication Highlights - Articles

## Psychology

### Andree Hartanto

Hartanto, A., Ong, N. C., Ng, W. Q., & Majeed, N. M. (2020). The effect of state gratitude on cognitive flexibility: A within-subject experimental approach. *Brain Sciences, 10*(7), 413.

Landy, J. F., Jia, M. L., Ding, I. L., Viganola, D., Tierney, W., Dreber, A., ... & Crowdsourcing Hypothesis Tests Collaboration. (2020). Crowdsourcing hypothesis tests: Making transparent how design choices shape research results. *Psychological Bulletin, 146*(5), 451.

Hartanto, A., Lau, I. Y. M., & Yong, J. C. (2020). Culture moderates the link between perceived obligation and biological health risk: Evidence of culturally distinct pathways for positive health outcomes. *Social Science & Medicine, 244*, 112644.

Yong, J. C., Hartanto, A., & Tan, J. J. (2021). Subjective social status and inflammation: The role of culture and anger control. *Health Psychology, 40*(1), 62.

Tierney, W., Hardy III, J., Ebersole, C. R., Viganola, D., Clemente, E. G., Gordon, M., ... & Culture & Work Morality Forecasting Collaboration. (2021). A creative destruction approach to replication: Implicit work and sex morality across cultures. *Journal of Experimental Social Psychology, 93*, 104060.

### Angela Leung

Leung, A. K. Y., Liou, S., Tsai, M. H., & Koh, B. (2020). Mood—Creativity Relationship in Groups: The Role of Equality in Idea Contribution in Temporal Mood Effects. *The Journal of Creative Behavior, 54*(1), 165-183.

Ito, K., Leung, A. K. Y., & Huang, T. (2020). Why do cosmopolitan individuals tend to be more pro-environmentally committed? The mediating pathways via knowledge acquisition and emotional affinity toward nature. *Journal of Environmental Psychology, 68*, 101395.

### Norman Li

Li, N. P., Yong, J. C., & Van Vugt, M. (2020). Evolutionary psychology's next challenge: Solving modern problems using a mismatch perspective. *Evolutionary Behavioral Sciences*.

Valentine, K. A., Li, N. P., Meltzer, A. L., & Tsai, M. H. (2020). Mate preferences for warmth-trustworthiness predict romantic attraction in the early stages of mate selection and satisfaction in ongoing relationships. *Personality and Social Psychology Bulletin, 46*(2), 298-311.



**Cheng Chi-Ying**  
Associate Professor  
of Psychology



**Kimin Eom**  
Assistant Professor  
of Psychology



**Andree Hartanto**  
Assistant Professor  
of Psychology  
(Education)



**Angela Leung**  
Associate Professor  
of Psychology

# Publication Highlights - Articles

## Psychology

### Norman Li

Jonason, P. K., Betes, S. L., & Li, N. P. (2019). Solving mate shortages: Lowering standards, searching farther, and abstaining. *Evolutionary Behavioral Sciences*.

Tsai, M. H., & Li, N. P. (2020). Depletion manipulations decrease openness to dissent via increased anger. *British Journal of Psychology*, 111(2), 246-274.

Thomas, A. G., Jonason, P. K., Blackburn, J. D., Kennair, L. E. O., Lowe, R., Malouff, J., ... & Li, N. P. (2020). Mate preference priorities in the East and West: A cross-cultural test of the mate preference priority model. *Journal of personality*, 88(3), 606-620.

Li, N. P., Yong, J. C., Tsai, M. H., Lai, M. H., Lim, A. J., & Ackerman, J. M. (2020). Confidence is sexy and it can be trained: Examining male social confidence in initial, opposite-sex interactions. *Journal of Personality*, 88(6), 1235-1251.

Yong, J. C., Li, N. P., & Kanazawa, S. (2020). Not so much rational but rationalizing: Humans evolved as coherence-seeking, fiction-making animals. *American Psychologist*.

### Jacinth Tan

Tan, J. J., Kraus, M. W., Impett, E. A., & Keltner, D. (2020). Partner commitment in close relationships mitigates social class differences in subjective well-being. *Social Psychological and Personality Science*, 11(1), 16-25.

Yong, J. C., Hartanto, A., & Tan, J. J. (2021). Subjective social status and inflammation: The role of culture and anger control. *Health Psychology*, 40(1), 62.

Tan, J. J. X., Kraus, M., Carpenter, N. C., & Adler, N. E. (2020). The association between objective and subjective socioeconomic standing and subjective well-being: A meta-analytic review.

### Tsai Ming-Hong

Tsai, M. H., Melia, N. V., & Hinsz, V. B. (2020). The effects of perceived decision-making styles on evaluations of openness and competence that elicit collaboration. *Personality and Social Psychology Bulletin*, 46(1), 124-139.

Tsai, M. H., & Li, N. P. (2020). Depletion manipulations decrease openness to dissent via increased anger. *British Journal of Psychology*, 111(2), 246-274.

Valentine, K. A., Li, N. P., Meltzer, A. L., & Tsai, M. H. (2020). Mate preferences for warmth-trustworthiness predict romantic attraction in the early stages of mate selection and satisfaction in ongoing relationships. *Personality and Social Psychology Bulletin*, 46(2), 298-311.

Li, N. P., Yong, J. C., Tsai, M. H., Lai, M. H., Lim, A. J., & Ackerman, J. M. (2020). Confidence is sexy and it can be trained: Examining male social confidence in initial, opposite-sex interactions. *Journal of Personality*, 88(6), 1235-1251.



**Norman Li**

Associate Professor  
of Psychology



**Jacinth Tan**

Assistant Professor  
of Psychology



**Tsai Ming-Hong**

Associate Professor  
of Psychology

# Publication Highlights - Articles

## Psychology

### Hwajin Yang

Toh, W. X., & Yang, H. (2020). Similar but not quite the same: Differential unique associations of trait fear and trait anxiety with inhibitory control. *Personality and Individual Differences, 155*, 109718.

Goh, S. K., Yang, H., Tsotsi, S., Qiu, A., Chong, Y. S., Tan, K. H., ... & Rifkin-Graboi, A. (2020). Mitigation of a prospective association between early language delay at toddlerhood and ADHD among bilingual preschoolers: evidence from the GUSTO cohort. *Journal of abnormal child psychology, 48*(4), 511-523.

Yang, H., Wang, J. J., Tng, G. Y., & Yang, S. (2020). Effects of Social Media and Smartphone Use on Body Esteem in Female Adolescents: Testing a Cognitive and Affective Model. *Children, 7*(9), 148.

Yang, H., Tng, G. Y., Ng, W. Q., & Yang, S. (2020). Loneliness, Sense of Control, and Risk of Dementia in Healthy Older Adults: A Moderated Mediation Analysis. *Clinical Gerontologist, 1-14*.



**Hwajin Yang**  
Associate Professor  
of Psychology

## Sociology

### Alwyn Lim

Lim, A., & Pope, S. (2020). Three types of organizational boundary spanning: Predicting CSR policy extensiveness among global consumer products companies. *Business Ethics: A European Review, 29*(3), 451-470.

Lim, A. (2021). Global Fields, Institutional Emergence, and the Regulation of Transnational Corporations. *Social Forces, 99*(3), 1060-1085.

Pope, S., & Lim, A. (2020). The governance divide in global corporate responsibility: The global structuration of reporting and certification frameworks, 1998–2017. *Organization Studies, 41*(6), 821-854.

### Yasmin Ortiga

Ortiga, Y. Y., & Macabasag, R. L. A. (2020). Understanding International Immobility through Internal Migration: “Left behind” Nurses in the Philippines. *International Migration Review, 0197918320952042*.

Ortiga, Y. Y. (2020). Shifting employabilities: Skilling migrants in the nation of emigration. *Journal of Ethnic and Migration Studies, 1-18*.

# Publication Highlights - Articles

## Sociology

### Yasmin Ortiga

Ortiga, Y. Y., Wee, K., & Yeoh, B. S. (2020). Connecting care chains and care diamonds: the elderly care skills regime in Singapore. *Global Networks*.

Ortiga, Y. Y., & Macabasag, R. L. A. (2020). Temporality and acquiescent immobility among aspiring nurse migrants in the Philippines. *Journal of Ethnic and Migration Studies*, 1-18.

Ortiga, Y. Y., Chou, M. H., & Wang, J. (2020). Competing for academic labor: Research and recruitment outside the academic center. *Minerva*, 58(4), 607-624.

### Hiro Saito

Saito, H. (2021). The Developmental State and Public Participation: The Case of Energy Policy-making in Post-Fukushima Japan. *Science, Technology, & Human Values*, 46(1), 139-165.

### Qian Forrest Zhang

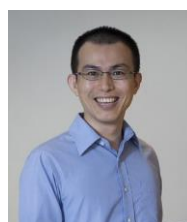
Andreas, J., Kale, S. S., Levien, M., & Zhang, Q. F. (2020). Rural land dispossession in China and India. *The Journal of Peasant Studies*, 47(6), 1109-1142



**Alwyn Lim**  
Assistant Professor  
of Sociology



**Yasmin Ortiga**  
Assistant Professor  
of Sociology



**Hiro Saito**  
Assistant Professor  
of Sociology



**Qian Forrest Zhang**  
Associate Professor  
of Sociology





## **Indigenous Perceptions and Climate Change Adaptation Behaviour in Malaysian Borneo**

Speaker: Dr Terry van Gevelt, Assistant Professor in Environmental Sustainability,  
Department of Politics and Public Administration, University of Hong Kong  
November 27, 2020

## **The Rise and Fall of Global Jihadism in Southeast Asia**

Speaker: Dr Quinton Temby, Visiting Fellow, ISEAS-Yusof Ishak Institute  
October 30, 2020



## **Emergent Socialities and the Governing of Precarity in the Contemporary Philippines**

Speaker: Professor Koki Seki, Graduate School of Humanities and Social Sciences, Hiroshima University  
October 16, 2020

## **Romantic Relationships Provide a Platform to Reduce Adult Insecurities**

Speaker: Dr Ximena Arriaga, Professor of Psychological Sciences and University  
Faculty Scholar, Purdue University  
March 20, 2020



## **Toward a Sociological Theory of Trans Value: Emergent Patterns of Inclusion in a Globalized Workplace**

Speaker: Associate Professor Emmanuel David, University of Colorado Boulder  
February 14, 2020

## **Schemes and Scheming: How Groups Think, Feel and Decide**

Speaker: De Verlin B. Hinsz, Professor, North Dakota State University  
February 7, 2020





## **Global Parenting and the Unintended Gender Consequences: The Case of Taiwan**

Speaker: Dr Pei-Chia Lan, Distinguished Professor of Sociology,  
Director of Global Asia Research Center, and  
Associate Dean of the College of Social Sciences, National Taiwan University  
February 5, 2020

## **Mandala Matters: Former Tributary States and Modern Civil Conflict in Thailand**

Speaker: Dr. Jessica Vechbanyongratana, Assistant Professor of economics, Chulalongkorn University  
January 31, 2020

## **Brexit and the Realignment of British Politics**

Speaker: Dr Steve Davies, Manchester Metropolitan University  
January 21, 2020



## **Lucky Numbers and Pollution: A Natural Experiment Testing the Effects of Cultural Traditions on Public Policy Implementation**

Speaker: Dr Amy Liu, Associate Professor, University of Texas, Austin  
January 17, 2020

## **Epicurus on Pleasure, a Complete Life, and Death: A Defence**

Speaker: Alex Voorhoeve, Professor of Philosophy, London School of Economics.  
January 16, 2020



# Faculty Spotlight

Jake's work thus far has addressed two main literatures. The first is the political economy of development, especially rural development. Jake is interested in questions of how states acquire the institutional capacities to accomplish developmental tasks. For instance: why are some state bureaucracies effective in promoting the private activities necessary for economic success while others hinder those activities and delay development? Jake pursued this question through extensive fieldwork with the irrigation and agricultural agencies in Thailand and Indonesia.



**Jacob Ricks**

Associate Professor  
of Political Science

Building upon his work in development, Jake has a project investigating how changing political institutions, especially the shift between democracy and dictatorship, determine policy interventions in the rice industry in Thailand, and thus impact the process of structural transformation. Unfortunately, due to COVID-19, fieldwork for this project has been delayed, but Jake looks forward to returning to this as soon as possible.

His second field of research has to do with the creation and perpetuation of national identities among minority populations. In other words, he's interested in the way that states can manipulate identities. One ongoing project includes analyzing data from an original online survey experiment carried out in Thailand, Indonesia, and the Philippines regarding the impact of language on political opinions. In another, Jake is studying the historical trajectory that has allowed the Thai state perpetuate the illusion of ethnic homogeneity, an illusion that is targeted to both external and domestic audiences. He's currently drafting a book manuscript based on historical sources arguing that the creation of the *Isan* regional identity was key to enticing Thailand's large Lao ethnic minority to abandon their ethnic identity and embrace Thai-ness.



**Ulas Onur Ince**

Associate Professor  
of Political Science

Ulas's research lies at the intersection of political theory, political economy, and colonial studies. He mainly investigates how the imperial constitution of global capitalism, manifested in entrenched political-economic asymmetries and socio-cultural hierarchies, has been theorized in the medium of political economy since the early-modern period.

His first book, *Colonial Capitalism and the Dilemmas of Liberalism* (Oxford UP, 2018) situates the origins of this problem in the British Empire and its distinctly liberal vindications in the long-eighteenth century. The book contends that the theoretical parameters of liberalism were forged in the crucible of colonial expropriation and exploitation that gave birth to the capitalist world economy. The oft-noted imagination of the British Empire as an "empire of liberty" – the global avatar of private property, free trade, and free labor – had to grapple with the empire's record of territorial conquest, bonded labor, and resource extraction across four continents.

Ulas's current book project, *Between Commerce and Empire: Capitalism and the Limits of Liberal Anti-Imperialism*, turns the framework of colonial capitalism on the liberal critics of European colonialism in the same period. It is argued that classical political economists' anti-imperialism was ultimately constrained by their commitment to commercial and capitalist expansion. Their efforts to imagine liberal commerce as an alternative to illiberal empire, the book shows, foundered on the dependence of commerce and capital on Atlantic slavery, settler colonialism in North America, and free trade imperialism in Asia.

In addition to the two books, Ulas has produced a series of articles that explore the political aspects of capitalism and their reception in political and economic thought. Two article manuscripts in progress push these agendas in new directions. One paper traces entwinement of economic and racial categories in the context of Britain's Asian empire, expanding the scope of "racial capitalism" beyond the extant scholarship's fixation on the Atlantic history. The second paper critically examines the uses of colonial history in the field of new institutional economics, connecting the arguments of the second book project to contemporary debates in comparative politics and development studies.

# Achievements - Awards

Best Paper Award

## **Dual Attitude Model of Opinion Diffusion: Experiments with Epistemically Motivated Agents**

7<sup>th</sup> *International Conference on Behavioural and Social Computing (BESC 2020)*

Riyang Phang, Lin Qiu and Angela K.-Y. Leung



Opinion diffusion is often simulated in agent-based models to reveal the perpetuation of norms and beliefs. This paper presents a dual attitude model where agents' interaction, information search, and opinion formation are influenced by the need for cognitive closure (NFCC). Two experiments simulated topic advocacy with either high- or low-NFCC agents. Experiment one initiated societies with unbiased distribution of NFCC levels between advocates of two competing topics, while experiment two initiated biased distributions of NFCC levels between the topics. Results in the unbiased condition showed that the popularity of the majority topic increases over time in high NFCC societies while it decreases over time in low NFCC societies. These results are magnified in the biased context where high NFCC agents provided an NFCC advantage for their advocated topic. When high NFCC agents' advocated topic is the majority or equal at initiation, the topic's popularity will increase significantly over time. When high NFCC agents' advocated topic is minority at initiation, these agents resist the assimilative pressures of the majority topic to protect their own topic from popularity losses. Tracking simulations over time revealed different dynamics generated between the two experimental conditions and showed the roles low NFCC agents and edge-of-cluster agents play in enabling the emergence of such patterns. These results may shed light on the impact NFCC individuals have in within-society and between societies cultural shifts.



NASPAA Dissertation Award

## **Accountability Challenges in Collaborative Governance**

Seulki Lee

Assistant Professor of Public Policy, Seulki Lee, who joined SOSS in July 2020, was awarded the NASPAA Dissertation Award in September 2020, by the Network of Schools of Public Policy, Affairs, and Administration (NASPAA). Dr. Lee completed the dissertation, entitled "Accountability Challenges in Collaborative Governance", and received her doctoral degree in Public Administration at the Robert Wagner Graduate School of Public Service of New York University in June 2020. The papers in this dissertation examine complexities and uncertainties around the accountability question—to whom the collaborative is accountable and for what? The first paper explicates the nature of collaborative governance accountability and provide a framework for assessing it. The framework, grounded on a process-based approach to accountability, presents three dimensions—information, discussion, and consequences—and several components and indicators for each dimension. The second paper explores how actors in collaborative governance manage conflicting accountability demands in the context of a Korean interorganizational network. The study identifies different types of accountability tensions and actors' strategic response to them. Findings suggest that accountability tensions may be viewed as opportunities for strengthening partnerships and advancing shared purposes. The third paper examines empirically what drives the perceived legitimacy of collaborative governance. A survey experiment among a sample of US residents is used to test the effect of three factors—representation, performance information, and issue complexity—on perceived legitimacy. Findings suggest that representation and performance information influence perceived legitimacy while the effect of issue complexity is unclear.

# Achievements - Promotion

The School of Social Sciences is delighted to announce the following promotions:

## **Promotion to Associate Professor with Tenure with effect from July 2020**

---



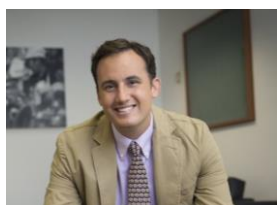
**TSAI Ming-Hong**  
Associate Professor of Psychology  
Office: SOSS #04-066  
Tel: 6828 1905  
Email: mhtsai@smu.edu.sg

## **Promotion to Associate Professor with Tenure with effect from January 2021**

---



**INCE Onur Ulas**  
Associate Professor of Political Science  
Office: SOSS #04-080  
Tel: 6828 1902  
Email: ulasince@smu.edu.sg



**Jacob RICKS**  
Associate Professor of Political Science  
Office: SOSS #04-079  
Tel: 6808 5460  
Email: jacobricks@smu.edu.sg



**Orlando WOODS**  
Associate Professor of Humanities  
Office: SOL #04-010  
Tel: 6828 0718  
Email: orlandowoods@smu.edu.sg