

# SOSS Insights

*The research newsletter of SMU School of Social Sciences*

Issue 9, February 2025

## Contents

|                           |       |
|---------------------------|-------|
| Thought Leadership        | 2-4   |
| SOSS Research at a glance | 5     |
| Publication Highlights    | 6-14  |
| Events                    | 15-22 |
| Faculty Spotlight         | 23-24 |
| Research Centres          | 25    |
| Achievements              | 26-30 |

# Thought Leadership



**Lily Kong**

President SMU; Lee Kong Chian Chair Professor of Social Sciences

## Keynote Speeches, Invited Talks and Public Lectures

| Date         | Event   | Role                          |
|--------------|---|-------------------------------|
| 12 Dec 2024  | “The Enduring Legacy of Peranakan Culture”, Peranakan Museum Docents Training, Peranakan Museum, Singapore  | Speaker                       |
| 27 Nov 2024  | IPS-Nathan Lectures, Lecture 3: “Beyond the Ivory Tower: Research and the Dilemmas of Quality and Relevance”, National University of Singapore, Singapore   | 15th S R Nathan Fellow        |
| 23 Nov 2024  | The Conference on World Geography, “Creating future-ready cities: the science and art of city-making”, Geographical Society of China, China (delivered virtually from Singapore)                        | Keynote Speaker               |
| 17 Nov 2024  | Southeast Asian Forum, “Towards an Imagined ASEAN community”, Center for Southeast Asian Studies, South China Normal University, China (delivered virtually from Singapore)                             | Keynote Speaker               |
| 4 Nov 2024   | IPS-Nathan Lectures, Lecture 2: “At the Crossroads: Universities for the 100- Year Life”, National University of Singapore, Singapore   | 15th S R Nathan Fellow        |
| 24 Oct 2024  | 6th Lee Kuan Yew Senior Fellowship in Public Service Programme, “The Future of Work: Implications for Educational Institutions in Human Capital Development”, Parkroyal on Beach Road, Singapore        | Speaker                       |
| 8 Oct 2024   | IPS-Nathan Lectures, Lecture 1: “Through the Looking Glass: Insights into the Origin and Evolution of Universities”, National University of Singapore, Singapore  | 15th S R Nathan Fellow        |
| 18 Sep 2024  | “Creating Future-ready Cities: The Science and Art of City-making”, NUS Cities Symposium: Liveable Cities in Uncertain Times, Singapore   | Distinguished Keynote Speaker |
| 25 Aug 2024  | “Belt and Road Initiative: Tourism on the New Silk Road”, Sun Yat Sen University Conference: Mutual Enhancement of Civilisations and the Construction of the Belt and Road Initiative, Guangzhou, China | Keynote Speaker               |
| 28 July 2024 | “The Enduring Legacy of Peranakan Culture”, Baba Nyonya Literary Festival 2024: Preserving Heritage Through Literature, National Library Board, Singapore   | Keynote Speaker               |
| 18 Jul 2024  | “SMU Sustainability Blueprint”, 15th ASEAN University Network Rectors’ Meeting, Session 2: “AUN Universities at the Forefront of Sustainable Development on the Global Stage”, Bangkok, Thailand        | Panel Speaker                 |

# Thought Leadership



**William A. Callahan**

Professor of Political Science; Academic Director of Politics, Law and Economics (PLE) major

- “Hypervisible China” published in LSE IDEAS, 27 Nov 2024  
<https://blogs.lse.ac.uk/cff/2024/11/27/hypervisible-china/>



**David Chan**

Professor of Psychology; Director, Behavioural Sciences Initiative

- Professor David Chan delivered the Opening Keynote Address entitled “Frontiers in Health: Contributions from the Social and Behavioural Sciences” at the Singapore Public Health and Occupational Medicine Conference, held on 23 Sep 2024. The conference was attended by over 300 officials, researchers, practitioners, and policymakers in the health and related sectors. [YouTube](#)
- In the "Insights from the Inside" engagement session organised by the Social Science Research Council held on 29 Oct 2024 and attended by faculty from NUS, NTU, SMU, SUTD, and SUSS, Professor David Chan shared his belief in a scientist-practitioner model approach to issues in research, practice and public policy. He also offered advice on effective collaborations with public agencies, stressing the importance of professional engagements, social interactions and networks, and building trust in competence, integrity and benevolence as they relate to one's credibility with the research community, agencies and the public.



**Cheng Cheng**

Assistant Professor of Sociology

- Feature interview titled “The Gender Divide: The role of flexible working arrangements on gender equality”, City Perspectives, 2024, SMU, Singapore.  
<https://cityperspectives.smu.edu.sg/article/gender-divide-role-flexible-working-arrangements-gender-equality>

# Thought Leadership



**Ohjae Gowen**

Assistant Professor of Sociology

- Featured interview titled “More dads with dirty dishes, more babies and working mums”, *Research@SMU* November 2024 Issue. ([link](#))



**Devin Joshi**

Associate Professor of Political Science

- Joshi, Devin. 2024. IPU Youth Forum 10th Anniversary – Key speaker on UN Expert Consultation on Parliamentary Youth Representation Data, Inter-Parliamentary Union, Geneva, Switzerland (October 2024)



**Forrest Zhang**

Associate Professor of Sociology

- *Closing speech*: “Rural revitalization from a global perspective.” The 10<sup>th</sup> Heyang Forum on Rural Revitalization, Jinyun, Zhejiang, China (11 - 13 October 2024)
- *Keynote speech*: “Sustainable alternatives in rural development.” The 17<sup>th</sup> International Conference on Agricultural and Rural Development in China (ICARDC XVII), Singapore (25-26 July 2024)

# SOSS Research At A Glance

July to December 2024



**63** Publications

(Journal articles and book chapters)

**3** Other Publications



**24** Events

Public Lectures, Invited Talks, Seminars, etc

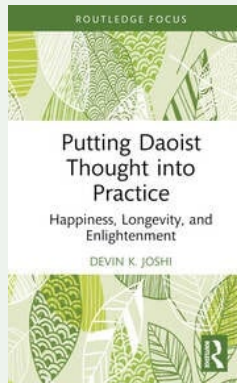
**33** Conference Presentations



**2** Research Grants (\$46,190)

Project start date: July - December 2024

# Publication Highlights - Books



Putting Daoist Thought into Practice  
Happiness, Longevity, and Enlightenment



**Devin Joshi**  
Associate Professor of Political Science;

This book shows how Chinese wisdom originating many centuries ago is still highly relevant to our lives today as the Daoist classics provide insightful prescriptions on how to live a life full of happiness, contentment, and healthy longevity. They also provide guidance regarding personal ethics, sustainable economics, and achieving enlightenment.

The book contains reflections on how to achieve happiness drawing from the *Liezi*, a Daoist classic, and it examines Daoist ideas about nourishing life to achieve longevity and the marked similarity between these principles and people living in “blue zones” today with the highest concentration of centenarians. It explores Daoist views on consciousness and enlightenment in the *Laozi* and *Zhuangzi* and their close resemblance to some of the most influential “new age” teachings on the subject. It highlights the ethical character of a Daoist sage by drawing on the Daoist classic of the *Wenzi* and enumerates lessons for transitioning toward a sustainable economy from the *Daodejing*.

Covering multiple dimensions of classical Daoist thought and their contemporary applications to human development and well-being, this text will usefully inform scholars, students, and researchers of Asian studies, religion, and philosophy, and individuals seeking self-improvement and personal wellness.

[https://www.routledge.com/Putting-Daoist-Thought-into-Practice-Happiness-Longevity-and-Enlightenment/Joshi/p/book/9781032852560?gad\\_source=1&gclid=CjwKCAiAjp-7BhBZEiwAmh9rBbuDR8WFmJ97ksZsPwPNxLnejdbJT2ZRfzJOxN\\_nkIC5ldOoefCckRoCm80QAvD\\_BwE](https://www.routledge.com/Putting-Daoist-Thought-into-Practice-Happiness-Longevity-and-Enlightenment/Joshi/p/book/9781032852560?gad_source=1&gclid=CjwKCAiAjp-7BhBZEiwAmh9rBbuDR8WFmJ97ksZsPwPNxLnejdbJT2ZRfzJOxN_nkIC5ldOoefCckRoCm80QAvD_BwE)

# Publication Highlights

## (Journal Articles and Book Chapters)

Validated publications (1 Jul – 31 Dec 24) extracted from IRIS Publications on 3 Jan 25

### Humanities

#### Lily Kong

Clifford, N., Lawrence, V., Venables, S., Kong, L., Clark, C., McCarron, L., & Doerr, S. (2024). Royal Geographical Society (with IBG) Medals and Awards celebration 2024.

Woods, O., Kong, L. and Lim, A. 'Sedimented surveillance in Southeast Asia's "smart" city-state: The case of Singapore' in Oberwittler, D. and Wickes, R. (eds) *The Handbook on Cities and Crime*. Cheltenham: Edward Elgar.

Woods, O., & Kong, L. (2024). The irreducible otherness of desi and desire in Singapore's gurdwaras: moral boundary-making in the shadows of a multicultural society. *Ethnic and Racial Studies*, 47(6), 1258-1279.

Das, P., Woods, O. and Kong, L. (2024) "Human sensors in the city of super apps: mobilizing people as infrastructure for smart city development in Jakarta, Indonesia", *City: Analysis of Urban Change, Theory, Action*, Vol. 28, 812-834, <https://doi.org/10.1080/13604813.2024.2427954>

Tok, T. Q. H., Woods, O., & Kong, L. (2024). What is Beyond Measurement for Social Cohesion?. *Social Indicators Research*, 1-19.

Woods, O., Bunnell, T. and Kong, L. (2024) "Territorialising the cloud or clouding the territory? Volumetric vulnerabilities and the militarised conjunctures of Singapore's smart city-state", *Political Geography*, Vol. 115, 1-9, <https://doi.org/10.1016/j.polgeo.2024.103211>

Grimley, E., Woods, O. and Kong, L. (2024) "Here, There, and Elsewhere: Ethnicity, Identity, and Global Orientation at an Indian International School in Singapore", *Folk, Knowledge, Place*, <https://doi.org/10.24043/001c.126671>.

Kong, L., Woods, O., and Tse, J (2025), "The End of the Beginning for the Geographies of Religion?" in *Handbook of the Geographies of Religion*, Springer International Handbooks of Human Geography, Springer Nature Switzerland AG, pp. 1-8, Chapter 1.

Kong, L. (2025), "Geography and Religion: Trends and Prospects" in *Handbook of the Geographies of Religion*, Springer International Handbooks of Human Geography, Springer Nature Switzerland AG, pp. 191-206, Chapter 12. Republished from *Progress in Human Geography* (2022), 14, no. 3: 355-371.

Kong, L. (2025), "Geography/Religion: Not Tabula Rasa, but Terra Incognita" in *Handbook of the Geographies of Religion*, Springer International Handbooks of Human Geography, Springer Nature Switzerland AG, pp. 207-212, Chapter 13.

Kong, L. (2025), "Mapping "New" Geographies of Religion: Politics and Poetics in Modernity" in *Handbook of the Geographies of Religion*, Springer International Handbooks of Human Geography, Springer Nature Switzerland AG, pp. 251-276, Chapter 16. Republished from *Progress in Human Geography* (2001), Vol. 25, No. 2, pp. 211-233. DOI: 10.1191/030913201678580485.



#### Lily Kong

President, SMU;  
Lee Kong Chian Chair Professor of Social Sciences

# Publication Highlights

## (Journal Articles and Book Chapters)

Validated publications (1 Jul – 31 Dec 24) extracted from IRIS Publications on 3 Jan 25

### Humanities

#### Lily Kong

Kong, L. (2025), "(In)Coherence and the Absent Present: 1990s and the Geographies of Religion" in *Handbook of the Geographies of Religion*, Springer International Handbooks of Human Geography, Springer Nature Switzerland AG, pp. 277-282, Chapter 17.

Kong, L. (2025), "Global Shifts, Theoretical Shifts: Changing Geographies of Religion" in *Handbook of the Geographies of Religion*, Springer International Handbooks of Human Geography, Springer Nature Switzerland AG, pp. 585-612, Chapter 35. Republished from *Progress in Human Geography* (2010), Vol. 34, No. 6. Pp. 755-776. DOI: 10.1177/0309132510362602.

Kong, L. (2025), "From the Outside In: Global Shifts and Changing Geographies of Religion" in *Handbook of the Geographies of Religion*, Springer International Handbooks of Human Geography, Springer Nature Switzerland AG, pp. 613-618, Chapter 36.

Tse, J, Kong, L. and Woods, O. (2025), "Conclusion: Geographies of Religion as Integrative Study", in *Handbook of the Geographies of Religion*, Springer International Handbooks of Human Geography, Springer Nature Switzerland AG, pp. 1249-1256, Chapter 70.

Lee, J., Woods, O., Kong, L. (2024) "Towards More Inclusive Smart Cities: Reconciling the Divergent Logics of Data and Discourse at the Margin\*", in Menkhoff, T., Kan S.N., Cheong, Kevin C.K.(eds). *Visions For The Future*, [https://doi.org/10.1142/9789811293108\\_0011](https://doi.org/10.1142/9789811293108_0011), pp.223 - 244. (First published as Lee, J., Woods, O. and Kong, L. (2020) in *Geography Compass*)

#### Matthew Hammerton

Hammerton, M., & Patra, S. (2024). What is the Fallacy of Approximation?. *Erkenntnis*, 89(7), 2591-2610.

#### David Ocón

Ocón, D., & Young, W. P. (2024). Bridging the nature-cultural heritage gap: evaluating sustainable entanglements through cemeteries in urban Asia. *Sustainability Science*, 19(5), 1641-1660.

#### Brandon Yip

Yip, B. (2024). Intellectual humility without limits: Magnanimous humility, disagreement and the epistemology of resistance. *Philosophy and Phenomenological Research*



**Matthew Hammerton**  
Associate Professor of Philosophy; Basket Coordinator for Modes of Thinking



**David Ocón**  
Assistant Professor of Arts and Cultural Management (Practice)



**Brandon Yip**  
Assistant Professor of Philosophy



# Publication Highlights

## (Journal Articles and Book Chapters)

Validated publications (1 Jul – 31 Dec 24) extracted from IRIS Publications on 3 Jan 25

### Political Science & Public Policy

#### John Donaldson

Wu, M., Zhang, Q. F., & Donaldson, J. (2024). Post-productivism and rural revitalization in China: Drivers and outcomes. *Journal of Rural Studies*, 110, 103382.

#### Dean Dulay

Dulay, D., & Lee, S. (2024). Sorry Not Sorry: Presentational strategies and the electoral punishment of corruption. *Electoral Studies*, 92, 102867.

#### Antong Liu

Liu, A. (2024). Han Feizi on reputation-driven disobedience: A comparative study. *American Political Science Review*, 1-13.

Liu, A. (2024). Understanding sociability through Mandevillian pride: comments on Robin Douglass's Mandeville's Fable. *History of European Ideas*, 1-5.

#### Ishani Mukherjee

Mukherjee, I., & Guha, P. (2024). Sequencing dengue control policy in Singapore: an evolutionary perspective for policy design. *Journal of Asian Public Policy*, 1-22.

Mukherjee, I., & Nair, S. (2024). DEI in climate policy: miles to go. In *Handbook on Diversity, Equity, and Inclusion in Public Administration* (pp. 312-326). Edward Elgar Publishing.



**John Donaldson**

Associate Professor of Political Science



**Dean Dulay**

Assistant Professor of Political Science



**Antong Liu**

Assistant Professor of Political Science



**Ishani Mukherjee**

Associate Professor of Public Policy; Programme Director, Master of Sustainability; Policy Lead, SMU Urban Institute

# Publication Highlights

(Journal Articles and Book Chapters)

Validated publications (1 Jul - 31 Dec 24) extracted from IRIS Publications on 3 Jan 25

## Political Science & Public Policy

### **William A. Callahan**

Callahan, W. A. (2024). China's Traditional, Modern and Neo-Socialist World Orders. In *Routledge Handbook on Global China* (pp. 52-66). Routledge.

Callahan, W. A. (2024). Visualizing International Politics: A Manifesto. In *Stranger than Paradise: Reconceptualizing Globalization*. Institute for Advanced Studies in the Humanities and Social Sciences, National Taiwan University.



### **William A. Callahan**

Professor of Political Science

Academic Director of Politics, Law and Economics (PLE) major

# Publication Highlights

## (Journal Articles and Book Chapters)

Validated publications (1 Jul – 31 Dec 24) extracted from IRIS Publications on 3 Jan 25

### Psychology

#### Andree Hartanto

Chia, J. L., Hartanto, A., & Tov, W. (2024). Supporting satisfaction, satisfying support: Bidirectional associations of social support and life satisfaction. *Social Psychological and Personality Science*, 19485506241283584.

Chen, N. R., Majeed, N. M., Goh, A. Y., Koh, P. S., Chia, J. L., & Hartanto, A. (2024). Dispositional optimism, sleep, and trait affective mediators: A latent variable approach. *Personality and Individual Differences*, 230, 112801.

T'ng, K., Chan, K. Q., & Hartanto, A. (2024). Experimental evidence of instagram influencers' impact on wellbeing. *Current Psychology*, 1-3.

Chia, J. L., Hartanto, A., & Tov, W. (2024). Retirement and life satisfaction among middle-aged and older adults: A piecewise growth mixture analysis. *Psychology and Aging*.

Majeed, N. M., Kasturiratna, K. S., Chen, N. R., & Hartanto, A. (2024). Factor structure of the CES-D-20 scale in young adults in Singapore: An examination of six alternative structures and measurement invariance by sex. *Psychiatry Research Communications*, 100196.

Kasturiratna, K. S., & Hartanto, A. (2024). The moderating role of trait online disinhibition in exacerbating the online victim-bully cycle. *Journal of Technology in Behavioral Science*, 1-13.

Hu, M., Diong, S. F., Kasturiratna, K. S., & Hartanto, A. (2024). Computer use frequency and cardiovascular health in middle-aged and older adults. *Computers in Human Behavior Reports*, 16, 100535.

Hu, M., Chua, X. C. W., Diong, S. F., Kasturiratna, K. S., Majeed, N. M., & Hartanto, A. (2024). AI as your ally: The effects of AI-assisted venting on negative affect and perceived social support. *Applied Psychology: Health and Well-Being*.

Kasturiratna, K. S., Hartanto, A., Chen, C. H., Tong, E. M., & Majeed, N. M. (2024). Umbrella review of meta-analyses on the risk factors, protective factors, consequences and interventions of cyberbullying victimization. *Nature Human Behaviour*, 1-32.

Guevarra, Y. A., Majeed, N. M., Hisham, E. M., & Hartanto, A. (2024). Positive and negative affect differentially predict individual differences and intra-individual changes in daily cognitive failures in younger and older adults. *Brain Sciences*, 14(12), 1259.

Hartanto, A., & Kasturiratna, K. S. (2024). Longitudinal bidirectional relation between fear of missing out and risky loot box consumption: Evidence for FoMO-Driven loot boxes spiral hypothesis. *Computers in Human Behavior Reports*, 16, 100535.

Hartanto, A., Sim, L., Lee, D., Majeed, N. M., & Yong, J. C. (2024). Cultural contexts differentially shape parents' loneliness and wellbeing during the empty nest period. *Communications Psychology*, 2(1), 105.

Hall, B., Schmidt, K., Wagge, J., Lewis, S., Weissgerber, S., Kiunke, F., ..., Hartanto, A., ..., & Buchanan, E. (2024). Registered replication report: A large multilab cross-cultural conceptual replication of Turri, Buckwalter, & Blouw (2015). *Advances in Methods and Practices in Psychological Science*



**Andree Hartanto**

Associate Professor of Psychology (Education)

# Publication Highlights

## (Journal Articles and Book Chapters)

Validated publications (1 Jul – 31 Dec 24) extracted from IRIS Publications on 3 Jan 25

### Psychology

#### Cheng Chi-Ying

Tan, E., Cheng, C. Y., Leung, A. K. Y., & Wee, S. X. (2024). To Whom Thou Art Bound: Bicultural Identity Integration Moderates the Influence of Conspiracy Beliefs on Chinese Americans' Ingroup Bias. *Journal of Cross-Cultural Psychology*, 00220221241263921.

Cheng, C. Y., Lim, A. J., Tan, Y. W., & Lee, F. (2024). Gender and Professional Identities in Businesswomen's Negotiation. *Psychological reports*, 00332941241287422.

#### Angela Leung

Tan, E., Cheng, C. Y., Leung, A. K. Y., & Wee, S. X. (2024). To Whom Thou Art Bound: Bicultural Identity Integration Moderates the Influence of Conspiracy Beliefs on Chinese Americans' Ingroup Bias. *Journal of Cross-Cultural Psychology*, 00220221241263921.

#### Norman Li

Tan, L. K., Li, N. P., & Tan, K. (2024). Cash, crowds, and cooperation: The effects of population density and resource scarcity on cooperation in the dictator game. *Evolution and Human Behavior*.

#### Lester Sim

Ip, K. I., Wen, W., Sim, L., Chen, S., & Kim, S. Y. (2024). Associations of Household and Neighborhood Contexts and Hair Cortisol Among Mexican-Origin Adolescents From Low-Income Immigrant Families. *Developmental psychobiology*, 66(6), e22519.

Hartanto, A., Sim, L., Lee, D., Majeed, N. M., & Yong, J. C. (2024). Cultural contexts differentially shape parents' loneliness and wellbeing during the empty nest period. *Communications Psychology*, 2(1), 105.



**Cheng Chi-Ying**  
Associate Professor of  
Psychology



**Angela Leung**  
Professor of Psychology;  
Advisor, SMU Institutional  
Review Board



**Norman Li**  
Professor of Psychology;  
Director, PhD in Psychology  
Programme



**Lester Sim**  
Assistant Professor of Psychology

# Publication Highlights

## (Journal Articles and Book Chapters)

Validated publications (1 Jul – 31 Dec 24) extracted from IRIS Publications on 3 Jan 25

### Psychology

#### Jacinth Tan

Tan, C. H., & Tan, J. J. (2024). Associations of cardiac function and arterial stiffness with cerebrovascular disease. *International Journal of Cardiology*, 407, 132037.

#### Kenneth Tan

Tan, L. K., Li, N. P., & Tan, K. (2024). Cash, crowds, and cooperation: The effects of population density and resource scarcity on cooperation in the dictator game. *Evolution and Human Behavior*.

Machia, L. V., Tan, K., & Agnew, C. R. (2024). Relationship commitment regulation: Influencing a partner's commitment to achieve one's commitment goals. *Social and Personality Psychology Compass*, 18(7), e12986.

#### William Tov

Chia, J. L., Hartanto, A., & Tov, W. (2024). Supporting Satisfaction, Satisfying Support: Bidirectional Associations of Social Support and Life Satisfaction. *Social Psychological and Personality Science*, 19485506241283584.

Tan, S. B., Tov, W., & Straughan, P. (2024). Do pedestrian safety improvements affect older adults' health and social outcomes equitably? A quasi experiment in Singapore. *Journal of Transport & Health*, 38, 101877.

Chia, J. L., Hartanto, A., & Tov, W. (2024). Retirement and life satisfaction among middle-aged and older adults: A piecewise growth mixture analysis. *Psychology and Aging*.

#### Yang Hwajin

Lau, C. Y., & Yang, H. (2024). Investigating the bidirectional association between executive functions and well-being in middle-aged and older adults: a cross-lagged modeling approach. *Current Psychology*, 1-17.

Tng, G. Y., & Yang, H. (2024). Indirect effects of intrusive parenting on externalizing behaviors in socioeconomically disadvantaged children: A parallel mediation analysis. *Cognitive Development*, 72, 101516.

Yang, H., Yang, S., Yang, Y., & Tan, Q. Y. J. (2024). Multidimensional predictors of adolescents' nonacademic digital media use in the United States: Insights from a bioecological perspective. *Journal of Children and Media*, 18(2), 178-197.



**Jacinth Tan**

Assistant Professor of Psychology;  
Lee Kong Chian Fellow



**Kenneth Tan**

Assistant Professor of Psychology



**William Tov**

Associate Professor of Psychology;  
Deputy Director, Centre for Research on Successful Ageing (ROSA)



**Yang Hwajin**

Associate Professor of Psychology; Associate Dean (Research)

# Publication Highlights

## (Journal Articles and Book Chapters)

Validated publications (1 Jul – 31 Dec 24) extracted from IRIS Publications on 3 Jan 25

### Sociology

#### Cheng Cheng

Yu, J., & Cheng, C. (2024). Motherhood and employment in China: Gender asymmetries in multi-generational families. *Social Forces*, soae105.

#### Annika Rieger

Ladegaard, I., & Rieger, A. (2024). How “Ceremonial Openness” Prevents Organizational Change: An Analysis of Corporate Earnings Calls in the Oil and Gas Industry, 2007–2020. *Social Problems*, spae045.

Jorgenson, Andrew, Hassan El Tinay, Jared Fitzgerald, Xiaorui Huang, Jennifer Givens, Taekyeong Goh, Orla Kelly, Annika Rieger, and Ryan Thombs. “Anthropogenic Drivers.” *Routledge Handbook of Climate Change and Society*, 2nd ed., edited by Steven R. Brechin and Seungyun Lee. London: Routledge Press.

Rieger, A. (2024). What have corporations got to do with it? A political economy approach to organizations and climate change. *economic sociology. perspectives and conversations*, 26(1), 24-29.

#### Paulin Straughan

Tan, S. B., Tov, W., & Straughan, P. (2024). Do pedestrian safety improvements affect older adults' health and social outcomes equitably? A quasi experiment in Singapore. *Journal of Transport & Health*, 38, 101877.

#### Forrest Zhang

Wu, M., Zhang, Q. F., & Donaldson, J. (2024). Post-productivism and rural revitalization in China: Drivers and outcomes. *Journal of Rural Studies*, 110, 103382.

Zhang, Q. F., & Wu, M. (2024). The decline and transformation of smallholders in Chinese agriculture: national trends. *The Journal of Peasant Studies*, 1-28.

Zhang, Q. F. (2024). From sustainable agriculture to sustainable agrifood systems: A comparative review of alternative models. *Sustainability*, 16(22), 9675.



**Cheng Cheng**

Assistant Professor of Sociology



**Annika Rieger**

Assistant Professor of Sociology



**Paulin Straughan**

Dean of Students; Professor of Sociology (Practice); Director, Centre for Research on Successful Ageing (ROSA); Urban Fellow, SMU Urban Institute



**Forrest Zhang**

Associate Professor of Sociology

# Events

## SOSS Research Camp

18 October 2024



**Presentation by Kenneth Tan**  
**Assistant Professor of Psychology**

### **The ironic effects of singlehood stigma and discrimination**

Understanding discrimination against singlehood has become a pivotal goal in recent research, but the effects of such discrimination on subsequent relationship initiation has not been well explored. The current research explores this issue from a social identity threat perspective, trying to understand whether stigmatizing singlehood results in greater tendency to form romantic relationships. Results show that exposure to singlehood stigma simultaneously increases motivation to avoid being single but decreases the capacity or control to do so. Thus, suggest that discrimination against singlehood to combat against being single may have paradoxical and undesired effects.



**Presentation by Charlotte Setijadi**  
**Assistant Professor of Humanities (Education)**

### **What explains the lack of anti-Chinese sentiments in Indonesia during the Covid-19 pandemic?**

Anti-Chinese sentiment has a long history in Indonesia. Dating back to the colonial, animosity against people of Chinese descent has ebbed and flowed over the years, but never entirely disappeared and occasionally erupted into racially motivated violence. After years of relative calm in the first fifteen years of the post-Suharto era, the Islamist mass mobilization against the ethnic Chinese former governor of Jakarta Basuki Tjahaja Purnama (Ahok) in 2016 brought anti-Chinese sentiment back to the forefront of Indonesian politics. Thus, when the Covid-19 pandemic began in 2020, triggering a wave of discrimination and hate crimes towards Chinese and East Asians in many countries, conditions in Indonesia seemed ripe for another outburst of anti-Chinese violence or other forms of scapegoating. Yet, no violence erupted and relatively few incidents of bullying or discrimination were reported. Perhaps even more remarkably, general anti-Chinese sentiment as measured in public opinion polls declined during the pandemic. Drawing on survey data conducted in Indonesia from 2017 to 2022 and analysis of Indonesia's political landscape during that time period, this study (co-authored with Dirk Tomsa of La Trobe University and Burhanuddin Muhtadi of State Islamic University in Jakarta) seeks to explain why there were no notable instances of anti-Chinese discrimination or violence during the Covid pandemic. We argue that the relative absence of publicly expressed prejudice towards the Chinese during the pandemic was due to the lack of political incentives for elite players in Indonesian politics to mobilise or fan anti-Chinese sentiments. To conclude, I discuss the implications of these findings to our understanding of the dynamics of anti-Chinese sentiments in countries such as Indonesia.

# Events

## SOSS Research Camp 18 October 2024



**Presentation by Antong Liu**  
**Assistant Professor of Political Science**

### **What Is the Sense of Honor? Some Preliminary Notes**

Political theorists' recent inquiries into human sociability as a foundation for political legitimacy have reignited the interest in the political implications of intersubjective passions such as love, resentment, and pride. Used to be one such passion crucial to Western sensibility, however, the sense of honor remains understudied to the extent that its meaning and nature have been unsatisfactorily grasped in contemporary academic literature. In this presentation, I propose a special way to understand this unique passion by challenging several existing definitions of it and drawing upon some modern intuitions about honor. The sense of honor, as I argue, should be defined as the desire to become socially recognized and esteemed by sticking to what seems to be right. This definition best captures (1) the moral ambiguity of the sense of honor as well as (2) its nature as a motivation for an individual to balance their sensitivity to and independence of social opinion. This preliminary examination serves as the beginning point of my ongoing book project, in which I reconstruct the underappreciated political theory of honor by several influential early modern Western thinkers ranging from Machiavelli to Kant in order to explain the enduring political implications of the sense of honor for democratic citizens' self-restrained resistance to social and political injustice.



**Presentation by Beomgeun Cho**  
**Assistant Professor of Public Policy**

### **Exploring the Impact of Network Management on Innovation Network Evolution: A Comparison of Public Research Organizations, Universities, and Conglomerates**

This study examines whether and how public research institutes, as network managers established to nurture and maintain a regional innovation network, have distinct impacts on tie formation compared to universities and conglomerate firms. Drawing on the resource dependency framework for network management and separate dimensions of trust, I explore how these three types of influential actors differently impact network evolution from four perspectives: ego, dyadic, brokering, and preferential attachment effects. Empirical evidence shows that all three types of influential actors engage in tie formation for their objectives. The differences in their influence arise from their ability to convey integrity-based trust through their network positions.



# Events

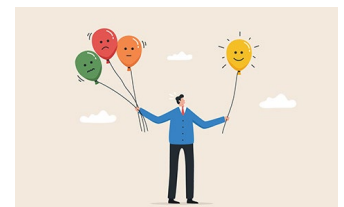


## **Modeling future climate mortality: Implications for ethics, human security & climate litigation**

Speaker: Richard Parncutt, Professor of Systematic Musicology, University of Graz  
5 July 2024

## **Executive Functions and Feedback in Regulatory Monitoring: Towards an Understanding of Flexible and Adaptive Emotion Regulation**

Speaker: Gilian Ng Rui, PhD Candidate in Psychology, SOSS, SMU  
12 July 2024



## **ICARDC XVII Conference**

### Keynote Speakers:

- Nico Heerink, Professor of Development Economics, Wageningen University
- Peter Ho, Chair Professor, School of Public Affairs, Zhejiang University; Professorial Fellow, Department of International Development, The London School of Economics
- Thomas Reuter, former professor and current Professorial Fellow, Asia Institute, The University of Melbourne
- Ye Jingzhong, Professor and former Dean, College of Humanities and Development Studies, China Agricultural University
- Forrest Zhang, Associate Professor of Sociology, SMU

25 & 26 July 2024

## **Back to Future: Some Notes on Indonesian Urban Utopias**

Speaker: Abidin Kusno, Professor of Environmental Studies, York University  
29 August 2024



# Events

## **Book Launch: Memories of Unbelonging: Ethic Chinese Identity Politics in Post-Suharto Indonesia**

Opening Address: Kenneth Benoit, Dean, SMU School of Social Sciences;  
Professor of Computational Social Science

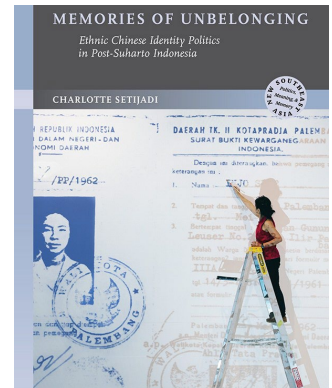
Author: Charlotte Setijadi, Assistant Professor of Humanities (Education)

Moderator: Yasmin Ortiga, Associate Professor of Sociology

Commentators:

- Abidin Kusno, Professor of Environmental Studies, York University
- Zhou Taomo, Associate Professor of Chinese Studies, National University of Singapore

30 August 2024



## **Parenting in Singapore: Insights from a Birth Cohort Study**

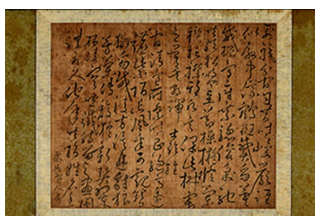
Speaker: Setoh Pei Pei, Associate Professor of Psychology,  
Nanyang Technological University

10 September 2024

## **Fostering Relationship Well-Being in the Good and the Bad Times**

Speaker: Bonnie Le, Assistant Professor of Psychology, University of  
Rochester

19 September 2024



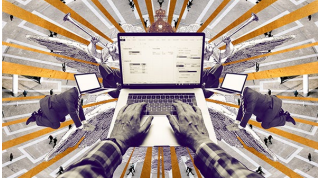
## **Inclusion, Participation, and the Rule for the People:**

### **Yi I's Neo-Confucian Vision and Its Contemporary Implications**

Speaker: Sungmoon Kim, Chair Professor of Political Philosophy,  
City University of Hong Kong

25 September 2024

# Events



## **Workism and its Discontents**

Speaker: Matthew Hammerton, *Assistant Professor of Philosophy, SMU*  
27 September 2024

## **Biopsychosocial Determinants of Neurocognitive Health**

Speaker: Tan Chin Hong, *Assistant Professor of Psychology, Nanyang Technological University*  
1 October 2024



## **Power and sexism in couple and family relationships**

Speaker: Nickola Overall, *Professor of Psychology, University of Auckland*  
3 October 2024

## **Can conflict improve organisational commitment and reduce turnover intention?**

Speaker: Tsai Ming-Hong, *Associate Professor of Psychology, SMU*  
22 October 2024



## **You are Fired, My Lord: Accountability and Identity Politics in Indonesia**

Speaker: Piero Stanig, *Associate Professor of Political Science, Bocconi University*  
25 October 2024

# Events

## **Public Subsidy/Private Accumulation: The Political Economy of Singapore's Public Housing**

Speaker: Chua Beng Huat, Emeritus Professor, NUS; Visiting Fellow, SMU  
1 November 2024



## **The moderating role of perceived motives of scientists**

Speaker: Kimin Eom, Senior Lecturer of Management,  
The Australian National University  
5 November 2024

## **Union History and Midlife Health**

Speaker: Zhenchao Qian, Professor of Sociology, Brown University  
6 November 2024



## **The Digital Century: How Singapore can stay a digital and creative capital in 2035**

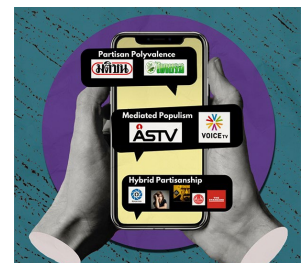
Speaker: Frederic Martel, Professor of Creative Economics,  
Zurich University for the Arts  
7 November 2024

## **Hybrid Partisanship: The Contentious Politics of Thailand's Digital Media Landscape**

Speakers:

- Duncan McCargo, President's Chair in Global Affairs, School of Social Sciences, Nanyang Technological University
- Alexandra Colombier, PhD Candidate in Information and Communication Sciences, University of Le Havre

7 November 2024



# Events



## **Transmission as an Act of the Disenfranchised: The Politics of Transmission, from Early China to the Early Modern Period**

Speaker: Leigh Jenco, Professor of Political Theory, London School of Economics and Political Science

8 November 2024

## **Public Support for Environmental NGOs: The Case of Southeast Asia**

Speaker: Christianna Sirindah Parr, PhD candidate, Dept. of Political Science, University of Washington

18 November 2024



## **Measuring parties' issue positions and saliences in the era of LLMs**

Speaker: Michael Laver, Emeritus Professor, New York University

27 November 2024

## **A Traditional Chinese Perspective on Sustainability: Daoism and Ecology**

Speaker: Livia Kohn, Professor of Religion and East Asian Studies, Boston University

29 November 2024



# Events

## 4th SMU ROSA Annual Symposium on Successful Ageing 22 October 2024

The Fourth ROSA Symposium on Successful Ageing was held on 22 October 2024 at SMU's Mochtar Riady Auditorium where it hosted a 312-strong audience to discuss the pertinent issue of how social policies shape the well-being and community integration of older adults, under the banner "Creating Age-Friendly Environments: Fostering Successful Ageing". It featured discussions among academic experts on potential policies to foster a conducive environment for ageing-in-place against the backdrop of Singapore's rapidly ageing population.



Professor Timothy Clark, Provost of SMU, opened the conference with a call to explore how built and social environments shape ageing-in-place, stressing how Singapore is on the cusp of a super-aged society. He further encouraged ROSA to continue its good work on conducting research on the broader implications of ageing-in-place for older adults and its repercussions for policy-making.

Mr Tan Kiat How, Senior Minister of State for Communication and Information and Senior Minister of State for National Development, then graced the conference with a guest of honour's address noting the importance of improving physical living environments and community-led initiatives to empower older adults in Singapore. He highlighted Project Silverlight as a prime example of community-led initiatives and expressed hope that there would be more of such projects following in its footsteps.



Next, Dr Aiko Kikkawa explained key findings on ageing as a megatrend in Asian societies, shedding light on how despite Asia's rapidly ageing population, the region is largely unprepared to face the challenges of this phenomenon. This is exacerbated by trends of inequality within the Asian older adult population across dimensions of well-being.

Professor Paulin Straughan then showcased ROSA's latest research on ageing-in-place, introducing a conceptual framework to make sense of this concept. She argued that ageing-in-place contributes to well-being by evoking a sense of attachment (including place identity, continuity and social inclusion) in older adults. Professor Straughan proceeded with a live demonstration of SMU City 2026, a virtual simulation prototype that seeks to demonstrate the effects of policies on the economic, mental, physical and social well-being of older adults.

The conference culminated in a panel discussion moderated by Associate Professor William Tov, where Dr Kikkawa and Professor Straughan were joined by fellow panelist Professor Ursula Staudinger, Rector of Technische Universität Dresden for an insightful discussion exploring the multifaceted strategies to support older adults to age-in-place.

# Faculty Spotlight



**Yang Hwajin**

Associate Professor of Psychology;  
Associate Dean (Research)

Hwajin Yang is a psychologist whose research primarily focuses on cognitive and developmental psychology. She has established influential research programs that advance our understanding of adaptive and healthy cognitive and socioemotional functioning across the lifespan. Her work addresses critical issues at the intersection of psychology and modern technology use, providing valuable insights into the challenges and opportunities of the digital age. Recent empirical studies from Hwajin's lab focus on three major themes:

- (a) Investigating how the use of technologies, such as ChatGPT, smartphones, and social media, influences cognitive flexibility, emotional regulation, and mental health across different age groups, particularly young children, adolescents, and older adults.
- (b) Identifying individuals' nuanced psychological profiles in susceptibility to addictive digital media use and uncovering the associated risk and protective factors
- (c) Developing actionable interventions to mitigate the negative psychological effects of media technology and foster healthier consumption habits and more adaptive functioning in today's AI-driven world.

One of her recent papers exemplifies the impact of her research. Using a bioecological framework and analyzing data from over 22,000 U.S. parents, Hwajin examined how individual, familial, and socioenvironmental factors dynamically interact and influence adolescents' nonacademic digital media use. This study identified risk factors (e.g., BMI and anxiety) as well as protective factors—family interactions (e.g., regular family meals), regulatory capacities, physical activity, sufficient sleep, and supportive school and community environments. By highlighting the interplay of these factors, the study provides actionable insights for fostering healthier digital media habits and addressing their implications for adolescent well-being.

Building on her research expertise, Hwajin recently secured funding from the National Research Foundation (Korea) as a co-investigator for a large-scale longitudinal project. This interdisciplinary initiative explores the cognitive neurobehavioral impacts of overexposure to AI-based media content on children and adults. The project employs a machine learning-based longitudinal approach to construct global database, paving the way for groundbreaking insights into the long-term effects of AI-based digital media consumption.

Overall, Hwajin's research exemplifies a commitment to tackling the complexities of modern life through rigorous methodology and interdisciplinary collaboration. Her work not only deepens our understanding of the cognitive, socioemotional, and mental health challenges posed by digital technology use but also provides practical solutions to promote resilience and healthier cognitive and socioemotional development in children, adolescents, and adults.

# Faculty Spotlight



**Nathan Peng**

Assistant Professor of Political Science  
(Education)

Inequality has been described as the defining challenge of our time in both developing and developed contexts. From the rise of far-right populism to economic underdevelopment, scholars are only beginning to grapple with the breadth and magnitude of inequality's consequences, and the equally complex barriers to its mitigation on political, social and economic fronts.

Nathan uses a variety of methods to tackle these challenges with a focus on Southeast Asian countries. He uses qualitative interviews and comparative analysis for theory generation and refinement, and quantitative tools such as multilevel modelling, geospatial analysis, and survey experiments to test these theories. To better fit the method to the question, Nathan is always keen to understand methodological advances and excited by the possibilities created by recent innovations in data analysis and collection.

Nathan's research on inequality is divided into three prongs. The first studies how we can better operationalize specific concepts in inequality and addressing some of the empirical challenges in representing these ideas in a timely and accurate fashion. For example, the natural "lag" created by the nature of the parent-child data used to quantify intergenerational mobility, which reflect social realities too outdated to be useful. To address some of these longstanding issues, he hopes to leverage the proliferation of digitalized, longitudinal data and the theoretical advancements we have seen across the social sciences (and beyond).

A second prong examines attitudes towards inequality; its implications on political behavior, and what might lessen the divisions we see today and break the self-reinforcing cycle of growing inequality and sociopolitical polarization. While different political systems translate these attitudes into policies unequally, it is still important to appreciate how exactly inequality self-perpetuates in political and policy choices, to become better able to disrupt such processes.

The last prong investigates the solutions we have and could employ to foster greater equality. Nathan's past work has looked at the reasons for low take-up of certain policy solutions, speaking to the need for greater nuance in understanding how people perceive these programs in their specific societies. Going forward, Nathan will examine how different contexts combat inequality to create more systemic theories on what works, what does not, and why.



# Research Centres

## Centre for Research on Successful Ageing

In the last 6 months, ROSA published 5 academic articles, 2 special reports and 1 research brief. It hosted the SMU-DBS Symposium on Essential Household Needs in Singapore in July 2024 and the 4<sup>th</sup> Annual ROSA Symposium in October 2024. Both events garnered significant media coverage. The Centre Director presented at two local conferences while the co-deputy director presented at an Economics conference in Bangkok. In addition, ROSA also prioritised discussions for research collaborations with key partners who can help translate our findings to policy or programmes. ROSA secured a half-a-year extension with the Agency for Integrated Care (AIC) to explore key topics such as social isolation and engagement in the community and are preparing new research agreements with organisations such as Ministry for Family and Social Development and Workforce Singapore.

## Lien Centre for Social Innovation

LCSI has several ongoing impact assessment studies, the most recently completed one being a project conducted in partnership with UNIQLO Singapore. LCSI examined the social impact of UNIQLO's community-based clothing redistribution pilot initiative, the Neighbours Helping Neighbours (NHN) programme. Beneficiaries reported increases in perceived wellbeing and sense of dignity and expressed appreciation for a platform that affords them autonomy while fulfilling their clothing needs. These findings were presented at the Orchard Road Business Association (ORBA)'s Sustainability Roadmap event in November 2024, as an example of how corporations can contribute to a circular economy while simultaneously doing good for the community.

# Achievements – Awards/Recognitions



**Lily Kong**  
President, SMU;  
Lee Kong Chian  
Chair Professor of  
Social Sciences

## Awards

- (2024) Elected Fellow (Foreign) of the Geographical Society of China for significant academic achievements and contributions to the field of geography.
- (2024) Royal Geographical Society (with IBG) Victoria Medal 2024 for conspicuous merit in research in urban, social and cultural geographies.

## Recognitions

- (2024) S R Nathan Fellow
- (2024) CHIJ Alumni Women of Distinction



**David Chan**  
Professor of Psychology;  
Director, Behavioural  
Sciences Initiative

## Appointments

- Professor David Chan has been appointed as a Research Fellow by the Centre for Liveable Cities (CLC). Jointly established by Singapore's Ministry of National Development (MND) and Ministry of Sustainability and the Environment (MSE), the CLC appoints distinguished experts in urban development to guide its strategic national research and knowledge-sharing initiatives. As a CLC Research Fellow, Professor Chan will lend his expertise to drive impactful research and capability development.

## Awards

- Professor David Chan was awarded the Ministry of National Development (MND) Medallion for his distinguished contributions to the National Parks Board, Singapore. The award was presented by National Development Minister Mr Desmond Lee at the ministry's award ceremony on 15 November 2024. Professor Chan is a two-time recipient of the MND Medallion. He first received the award in 2018 from Prime Minister Mr Lawrence Wong (who was then the National Development Minister) for his various distinguished contributions to MND.



# Achievements – Awards/Recognitions



**Ohjae Gowen**  
Assistant Professor  
of Sociology

Gowen, Ohjae. 2023. "Becoming a Father, Staying a Father: An Examination of the Cumulative Fatherhood Wage Premium to U.S. Residential Fathers." *Social Forces* 102(2): 475-495.

<https://doi.org/10.1093/sf/soad066>.

- 2024 Winner of the ASA Sociology of Population Section Student Paper Award
- 2024 Winner of the ASA Section on Aging & the Life Course Graduate Student Paper Award

# Achievements – Research Grants

## Research Projects Awarded Jul – Dec 24

### SMU Internal Research Grant – MOE AcRF Tier 1



PI: **Ishani Mukherjee**, Associate Professor of Public Policy; Programme Director, Master of Sustainability; Policy Lead, SMU Urban Institute

Project title: Understanding and Promoting Pro-Environmental behaviors in Singapore



PI: **Kenneth Tan**, Assistant Professor of Psychology

Project title: Primal world beliefs on singlehood well-being and relationship receptivity

# Achievements – New Admin Appointments



**Yang Hwajin**  
Associate Professor of Psychology;  
Associate Dean (Research)

## Research Committee



**Norman Li**  
Professor of  
Psychology



**Jacob Ricks**  
Associate Professor  
of Political Science



**Alwyn Lim**  
Associate Professor of  
Sociology



**Matthew Hammerton**  
Associate Professor of  
Philosophy; Basket  
Coordinator for Modes of  
Thinking



**Dean Dulay**  
Assistant Professor of  
Political Science

# Achievements – Promotion

The School of Social Sciences is delighted to announce the following promotion:

## **Promotion to Associate Professor with effect from January 2025**

---



**Matthew Hammerton**

Associate Professor of Philosophy; Basket  
Coordinator for Modes of Thinking  
Office: #04-41  
Email: mhammerton@smu.edu.sg



**Yasmin Ortiga**

Associate Professor of Sociology  
Office: #05-01  
Email: yasmino@smu.edu.sg